

USER GUIDE AND SPECIFICATIONS

NI myDAQ

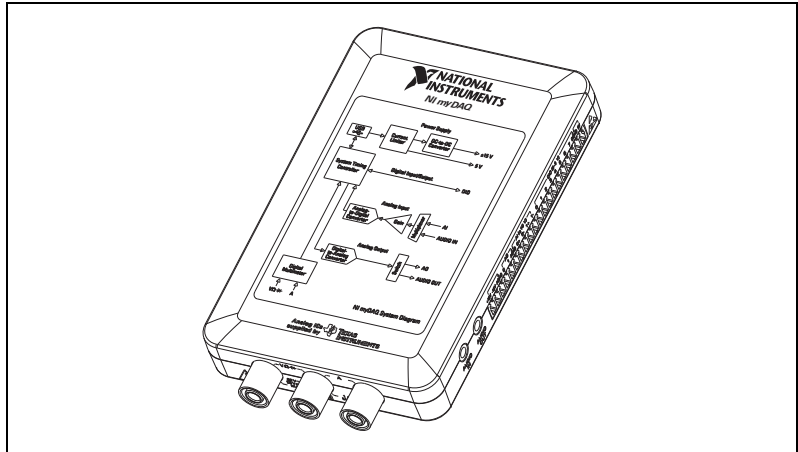


Figure 1. NI myDAQ

NI myDAQ is a low-cost portable data acquisition (DAQ) device that uses NI LabVIEW-based software instruments, allowing students to measure and analyze real-world signals. NI myDAQ is ideal for exploring electronics and taking sensor measurements. Combined with NI LabVIEW on the PC, students can analyze and process acquired signals and control simple processes anytime, anywhere.

Contents

Conventions	2
Safety Information	3
Electromagnetic Compatibility Guidelines	3
NI myDAQ Hardware Overview	4
Analog Input (AI)	5
Analog Output (AO)	5
Digital Input/Output (DIO)	5
Power Supplies	6
Digital Multimeter (DMM) Overview	6

NI myDAQ Software Overview	7
NI ELVISmx Driver Software.....	7
NI LabVIEW and NI ELVISmx Express VIs	7
NI myDAQ and NI Multisim	7
Getting Started	8
Making Signal Connections with NI myDAQ	8
Setting up Your NI myDAQ Device	8
Connecting Signals.....	10
Connecting Analog Input Signals.....	11
NI myDAQ DMM Fuse Replacement.....	14
Digital I/O (DIO) and Counters/Timers	17
Using NI myDAQ with Soft Front Panel (SFP) Instruments	18
NI ELVISmx Instrument Launcher.....	18
Digital Multimeter (DMM)	19
Oscilloscope (Scope).....	20
Function Generator (FGEN).....	21
Bode Analyzer.....	22
Dynamic Signal Analyzer (DSA).....	23
Arbitrary Waveform Generator (ARB)	24
Digital Reader.....	25
Digital Writer.....	26
Example: Measuring a Signal Using the NI ELVISmx Oscilloscope SFP with NI myDAQ.....	27
Using NI myDAQ with LabVIEW	27
NI ELVISmx Express VIs in LabVIEW	27
Example: Measuring Signals Using the NI ELVISmx Oscilloscope Express VI with NI myDAQ.....	28
Using NI-DAQmx with NI myDAQ.....	30
Example: Measuring Audio Pass-Through in LabVIEW with NI myDAQ	31
Specifications.....	34
Texas Instruments Components in NI myDAQ	46
Resource Conflicts.....	48
Additional Resources.....	50
Related Documentation	50
Other Resources.....	51
Common Terms and Acronyms.....	51
Warranty	52
Where to Go for Support	52

Conventions

The following conventions are used in this manual:



This icon denotes a tip, which alerts you to advisory information.



This icon denotes a note, which alerts you to important information.



This icon denotes a caution, which advises you of precautions to take to avoid injury, data loss, or a system crash.



CAUTION—The inputs/outputs of this product can be damaged if subjected to Electrostatic Discharge (ESD). To prevent damage, industry-standard ESD prevention measures must be employed during installation, maintenance, and operation.

Safety Information

Do not operate the hardware in a manner not specified in this document and in the user documentation. Misuse of the hardware can result in a hazard. You can compromise the safety protection if the hardware is damaged in any way. If the hardware is damaged, return it to National Instruments for repair.

Clean the hardware with a soft, nonmetallic brush. Make sure that the hardware is completely dry and free from contaminants before returning it to service.

Electromagnetic Compatibility Guidelines

This product was tested and complies with the regulatory requirements and limits for electromagnetic compatibility (EMC) as stated in the product specifications. These requirements and limits are designed to provide reasonable protection against harmful interference when the product is operated in its intended operational electromagnetic environment. There is no guarantee that interference will not occur in a particular installation. To minimize the potential for the product to cause interference to radio and television reception or to experience unacceptable performance degradation, install and use this product in strict accordance with the instructions in the product documentation.



Cautions The following statements contain important EMC information needed before installing and using this product:

- This product is intended for use in residential, commercial and industrial locations.
- This product may become more sensitive to electromagnetic disturbances in the operational environment when test leads are attached or when connected to a test object.
- Emissions that exceed the regulatory requirements may occur when this product is connected to a test object.
- Changes or modifications not expressly approved by National Instruments could void the user's authority to operate the hardware under the local regulatory rules.

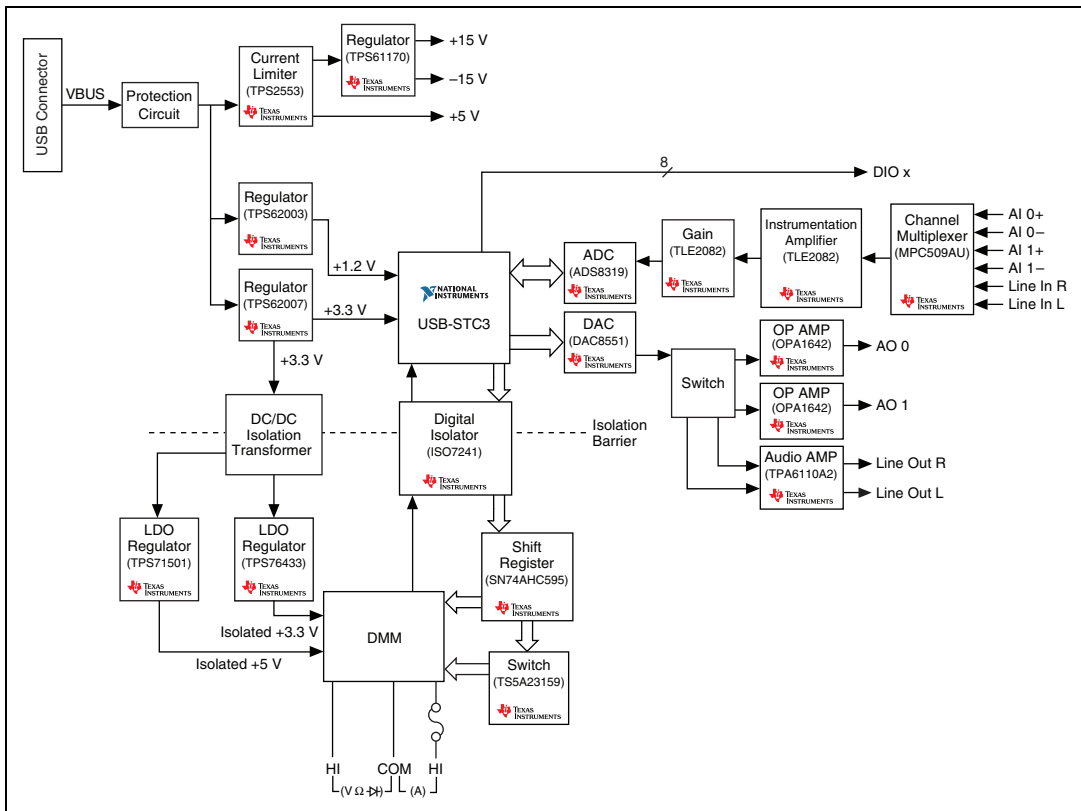
NI myDAQ Hardware Overview

NI myDAQ provides analog input (AI), analog output (AO), digital input and output (DIO), audio, power supplies, and digital multimeter (DMM) functions in a compact USB device.



Tip The *Common Terms and Acronyms* section has a list of acronyms and terms that you will see in this manual, and in many engineering and measurement documents and websites.

Integrated circuits supplied by Texas Instruments form the power and analog I/O subsystems of NI myDAQ. Figure 2 depicts the arrangement and function of the NI myDAQ subsystems. Refer to Table 5 for more information on all of the Texas Instruments components used in NI myDAQ.



Note: NI myDAQ components may be changed or substituted without notice.

Figure 2. NI myDAQ Hardware Block Diagram

Analog Input (AI)

There are two analog input channels on NI myDAQ. These channels can be configured either as general-purpose high-impedance differential voltage input or audio input. The analog inputs are multiplexed, meaning a single analog-to-digital converter (ADC) is used to sample both channels. In general-purpose mode, you can measure up to ± 10 V signals. In audio mode, the two channels represent left and right stereo line level inputs. Analog inputs can be measured at up to 200 kS/s per channel, so they are useful for waveform acquisition. Analog inputs are used in the NI ELVISmx Oscilloscope, Dynamic Signal Analyzer, and Bode Analyzer instruments.

Analog Output (AO)

There are two analog output channels on NI myDAQ. These channels can be configured as either general-purpose voltage output or audio output. Both channels have a dedicated digital-to-analog converter (DAC), so they can update simultaneously. In general-purpose mode, you can generate up to ± 10 V signals. In audio mode, the two channels represent left and right stereo outputs.



Caution If using earphones to listen to the audio output of the NI myDAQ, ensure that the volume is set to a safe level. Listening to audio signals at a high volume may result in permanent hearing loss.

Analog outputs can be updated at up to 200 kS/s per channel, making them useful for waveform generation. Analog outputs are used in the NI ELVISmx Function Generator, Arbitrary Waveform Generator, and Bode Analyzer instruments.

Digital Input/Output (DIO)

There are eight digital I/O (DIO) lines on NI myDAQ. Each line is a Programmable Function Interface (PFI), meaning that it can be configured as a general-purpose software-timed digital input or output, or it can act as a special function input or output for a digital counter. Refer to [Digital I/O \(DIO\) and Counters/Timers](#) section for more information about counters on NI myDAQ.



Note The digital I/O lines are 3.3 V LVTTTL and are tolerant to 5 V inputs. The digital output is not compatible with 5V CMOS logic levels.

Power Supplies

There are three power supplies available for use on NI myDAQ. +15 V and –15 V can be used to power analog components such as operational amplifiers and linear regulators. +5 V can be used to power digital components such as logic devices.

The total power available for the power supplies, analog outputs, and digital outputs is limited to 500 mW (typical)/100 mW (minimum). To calculate the total power consumption of the power supplies, multiply the output voltage by the load current for each rail and sum them together. For digital output power consumption, multiply 3.3 V by the load current. For analog output power consumption, multiply 15 V by the load current. Using audio output subtracts 100 mW from the total power budget.

For example, if you use 50 mA on +5 V, 2 mA on +15 V, 1 mA on –15 V, use four DIO lines to drive LEDs at 3 mA each, and have a 1 mA load on each AO channel, the total output power consumption is:

$$5 \text{ V} \times 50 \text{ mA} = 250 \text{ mW}$$

$$|+15 \text{ V}| \times 2 \text{ mA} = 30 \text{ mW}$$

$$|-15 \text{ V}| \times 1 \text{ mA} = 15 \text{ mW}$$

$$3.3 \text{ V} \times 3 \text{ mA} \times 4 = 39.6 \text{ mW}$$

$$15 \text{ V} \times 1 \text{ mA} \times 2 = 30 \text{ mW}$$

$$\begin{aligned} \text{Total output power consumption} &= 250 \text{ mW} + 30 \text{ mW} + 15 \text{ mW} + \\ &39.6 \text{ mW} + 30 \text{ mW} = 364.6 \text{ mW} \end{aligned}$$

Digital Multimeter (DMM) Overview

The NI myDAQ DMM provides the functions for measuring voltage (DC and AC), current (DC and AC), resistance, and diode voltage drop.

DMM measurements are software-timed, so update rates are affected by the load on the computer and USB activity.

NI myDAQ Software Overview

NI ELVISmx Driver Software

NI ELVISmx is the driver software that supports NI myDAQ. NI ELVISmx uses LabVIEW-based software instruments to control the NI myDAQ device, providing the functionality of a suite of common laboratory instruments. Refer to the *Using NI myDAQ with Soft Front Panel (SFP) Instruments* section for information on the NI ELVISmx suite of measurement instruments. Refer to the *NI ELVISmx Readme* for information on supported operating systems and application software. The *NI ELVISmx Readme* is located on your NI ELVISmx driver software installation media, or can be found by searching for ELVISmx on the **Drivers and Updates** page at ni.com/downloads.

NI LabVIEW and NI ELVISmx Express VIs

Also installed with NI ELVISmx are the LabVIEW Express VIs, which use NI ELVISmx software instruments to program NI myDAQ with more enhanced functionality. For more information on the NI ELVISmx Express VIs, refer to the *Using NI myDAQ with LabVIEW* section.



Note NI ELVISmx does not support LabVIEW (64 bit). For software support information, refer to the NI myDAQ driver software readme—the *NI ELVISmx Readme*—located on your NI ELVISmx driver software installation media. The *NI ELVISmx Readme* can also be found by searching for ELVISmx on the **Drivers and Updates** page at ni.com/downloads.

NI myDAQ and NI Multisim

You can use NI ELVISmx instruments in NI Multisim to simulate a circuit, measure the real signals with NI myDAQ, and compare simulated and acquired data. To see step-by-step instructions for using NI ELVISmx instruments in NI Multisim, refer to *Using NI ELVISmx in NI Multisim* help file, installed with NI ELVISmx. To access this help file, go to **Start»All Programs»National Instruments»NI ELVISmx for NI ELVIS & NI myDAQ»Using NI ELVISmx in NI Multisim**.

Getting Started



Caution For EMC compliance, the USB cable must be less than 2.0 m (6.6 ft) in length. Also, wires attached to the MIO screw terminal connector must be limited to 30.0 cm (11.8 in.) in length.

Getting started with NI myDAQ is a simple process, but it is important to ensure that you install the right components in the correct order. To get started with your NI myDAQ, complete the following steps:

1. Install the NI myDAQ Software Suite from the DVD shipped with your device.

The NI myDAQ Software Suite installs application software (NI LabVIEW, NI Multisim) first, and then installs the NI ELVISmx driver software.



Note If you are not installing software from the NI myDAQ Software Suite media, make sure to install all application software before installing the driver software.

2. Connect the cable from the computer Hi-Speed USB port to the USB port on the device.

The computer will recognize the NI myDAQ and the NI ELVISmx Instrument Launcher appears. You can also manually open NI ELVISmx Instrument Launcher by selecting **Start»All Programs»National Instruments»NI ELVISmx for NI ELVIS & NI myDAQ»NI ELVISmx Instrument Launcher**.

Making Signal Connections with NI myDAQ

Setting up Your NI myDAQ Device



Cautions Insert and remove the 20-position screw terminal connector aligned evenly to the NI myDAQ. Inserting the screw terminal connector at an angle to the NI myDAQ may cause damage to the connector.

The screw terminal connector *must* snap securely into place to ensure proper signal connection.

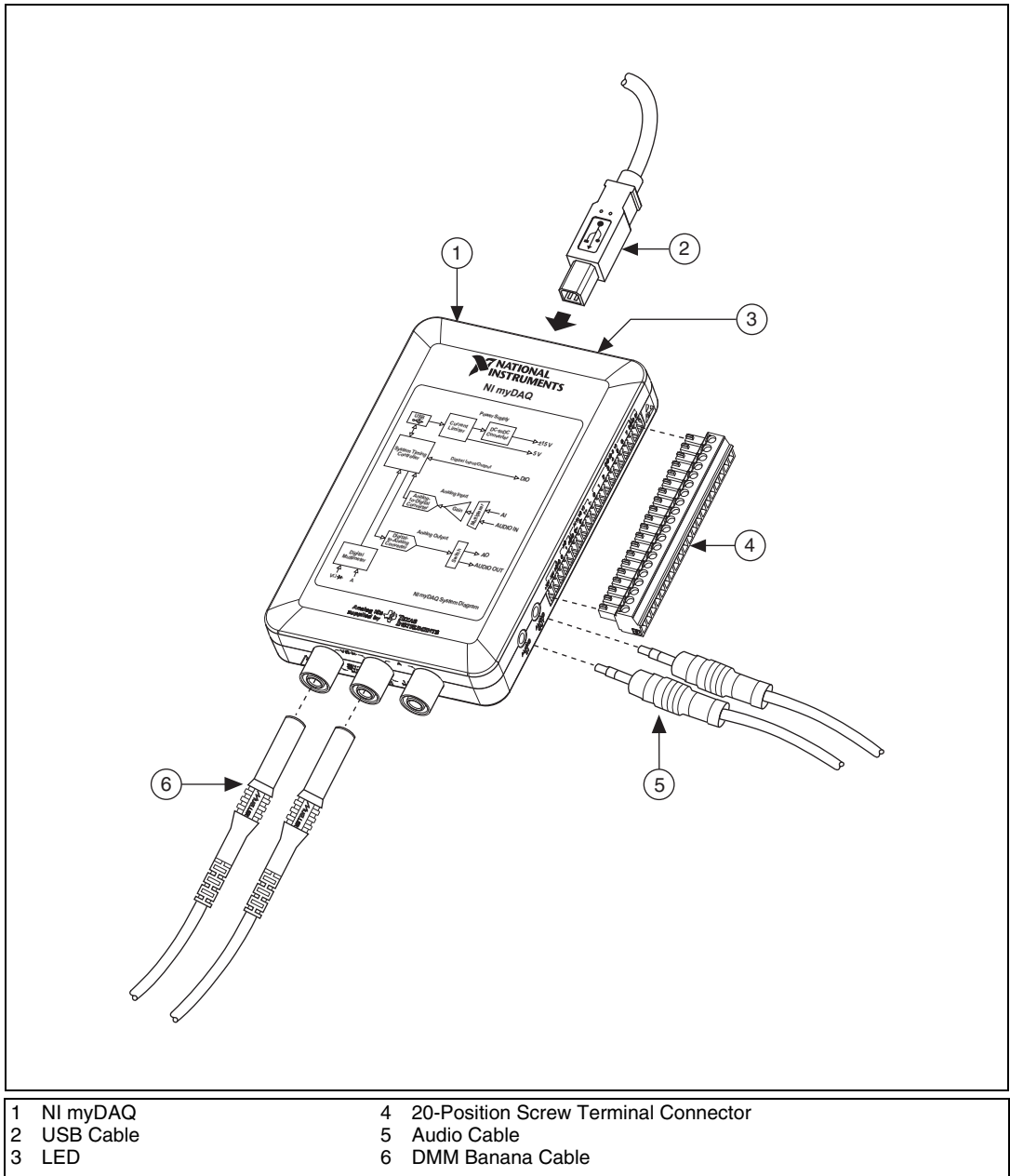


Figure 3. NI myDAQ Connection Diagram

Connecting Signals

Figure 4 shows the available audio, AI, AO, DIO, GND, and power signals accessed through the 3.5 mm audio jacks and screw terminal connections. Refer to Table 1 for descriptions of these signals.



Caution Signal wires *must* be securely affixed and screwed down in the screw terminal connector to ensure proper connection.

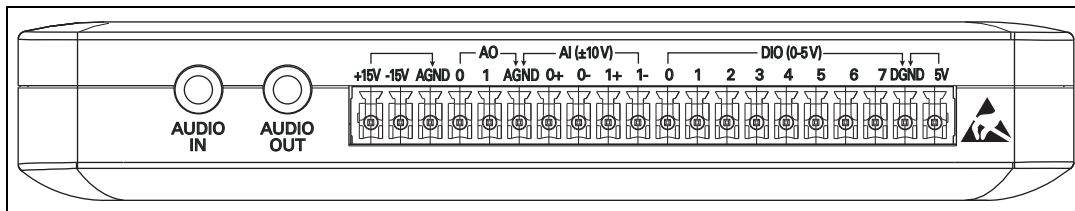


Figure 4. NI myDAQ 20-Position Screw Terminal I/O Connector

Table 1. Screw Terminal Signal Descriptions

Signal Name	Reference	Direction	Description
AUDIO IN	—	Input	Audio Input —Left and right audio inputs on a stereo connector
AUDIO OUT	—	Output	Audio Output —Left and right audio outputs on a stereo connector
+15V/-15V	AGND	Output	+15 V/-15 V power supplies
AGND	—	—	Analog Ground —Reference terminal for AI, AO, +15 V, and -15 V
AO 0/AO 1	AGND	Output	Analog Output Channels 0 and 1
AI 0+/AI 0-; AI 1+/AI 1-	AGND	Input	Analog Input Channels 0 and 1
DIO <0..7>	DGND	Input or Output	Digital I/O Signals —General-purpose digital lines or counter signals
DGND	—	—	Digital Ground —Reference for the DIO lines and the +5 V supply
5V	DGND	Output	5 V power supply

Figure 5 shows the DMM connections on the NI myDAQ. Table 2 describes these signals.



Caution 60 VDC/20 Vrms maximum. *Do not* plug digital multimeter probes into circuits with Hazardous Voltages, such as wall outlets.

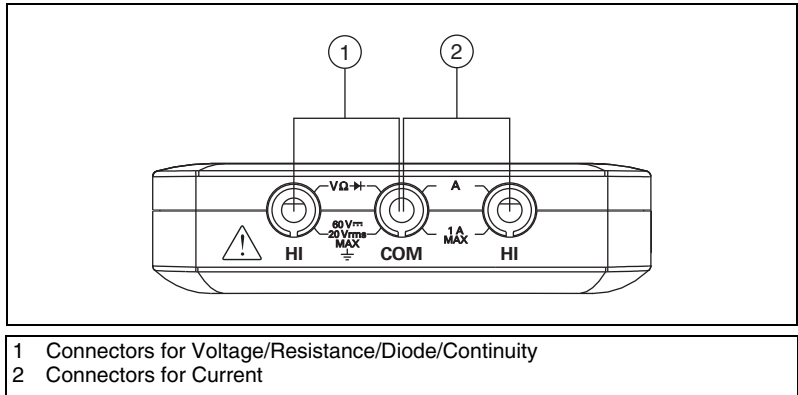


Figure 5. Connections for DMM Measurements

Table 2. DMM Signal Descriptions

Signal Name	Reference	Direction	Description
HI (V)	COM	Input	Positive terminal for voltage, resistance, and diode measurements
COM	—	—	Reference for all DMM measurements
HI (A)	COM	Input	Positive terminal for current measurements (Fused: F 1.25 A 250 V Fast-Acting)

Connecting Analog Input Signals

When configuring the input channels and making signal connections, you must first determine whether the signal sources are floating or ground referenced. The following sections describe these two signal types.

Ground-Referenced Signal Sources

A ground-referenced signal source is connected to the building system ground, so it is already connected to a common ground point with respect to the NI myDAQ device, assuming that the computer is plugged into the same power system. Instruments or devices with nonisolated outputs that plug into the building power system are ground-referenced signal sources.



Note Most laptop computers have isolated power supplies, and are consequently not connected to the building ground system. In these cases, treat the analog input signal as floating with respect to NI myDAQ.

The difference in ground potential between two instruments connected to the same building power system is typically between 1 and 100 mV. This difference can be much higher if power distribution circuits are improperly connected. If a grounded signal source is improperly measured, this difference might appear as a measurement error. Connect the differential analog inputs across the signal source and do not connect the NI myDAQ AGND pin to the grounded source.

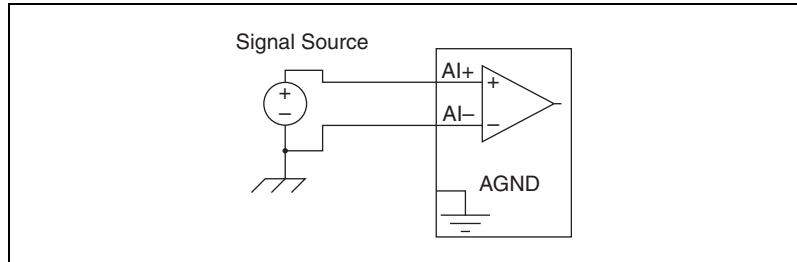


Figure 6. Ground-Referenced Differential Connection

Floating Signal Sources

A floating signal source is not connected to the same ground reference as NI myDAQ, but instead has an isolated reference point. Some examples of floating signal sources are battery-powered devices, outputs of transformers, thermocouples, optical isolator outputs, and isolation amplifiers. An instrument or device that has an isolated output is a floating signal source. You must connect the ground reference of a floating signal to an NI myDAQ AGND pin through a bias resistor or jumper wire to establish a local or onboard reference for the signal. Otherwise, the measured input signal varies as the source floats out of the common-mode input range.

The easiest way to reference the source to AGND is to connect the positive side of the signal to AI+ and connect the negative side of the signal to AGND as well as to AI- without using resistors. This connection works well for DC-coupled sources with low source impedance (less than 100 Ω).

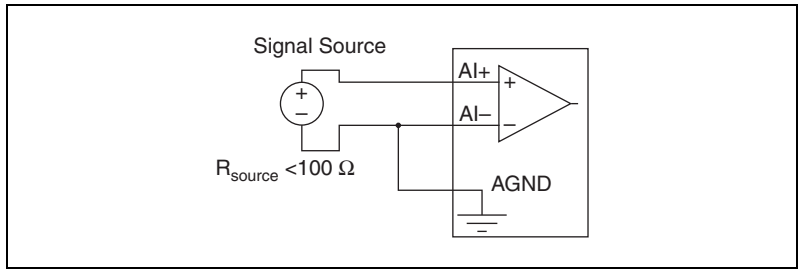


Figure 7. Differential Connections for Floating Signal Sources without Resistors

For larger source impedances, however, this connection leaves the differential signal path significantly off balance. Noise that couples electrostatically onto the positive line does not couple onto the negative line because it is connected to ground. This noise appears as a differential-mode signal instead of a common-mode signal, and thus appears in your data. In this case, instead of directly connecting the negative line to AGND, connect the negative line to AGND through a resistor that is about 100 times the equivalent source impedance. The resistor puts the signal path nearly in balance, so that about the same amount of noise couples onto both connections, yielding better rejection of electrostatically coupled noise. This configuration does not load down the source.

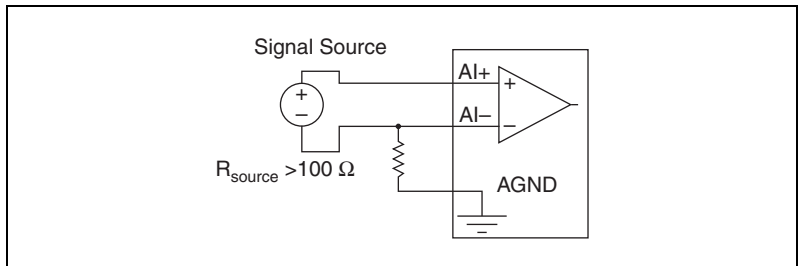


Figure 8. Differential Connections for Floating Signal Sources a Single Resistor

You can fully balance the signal path by connecting another resistor of the same value between the positive input and AGND, as shown in Figure 9. This fully balanced configuration offers slightly better noise rejection, but has the disadvantage of loading the source down with the series combination (sum) of the two resistors. If, for example, the source impedance is 2 kΩ and each of the two resistors is 100 kΩ, the resistors load down the source with 200 kΩ and produce a -1% gain error.

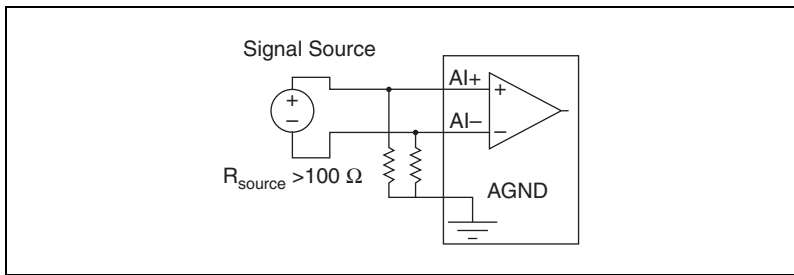


Figure 9. Differential Connections for Floating Signal Sources with Two Resistors

Both positive and negative analog input lines require a DC path to ground in order for the instrumentation amplifier to work. If the source is AC coupled (capacitively coupled), a resistor is needed between the positive input and AGND. If the source has low impedance, choose a resistor that is large enough not to significantly load the source but small enough not to produce significant input offset voltage as a result of input bias current (typically 100 kΩ to 1 MΩ). In this case, connect the negative input directly to AGND. If the source has high output impedance, balance the signal path as previously described using the same value resistor on both the positive and negative inputs.

NI myDAQ DMM Fuse Replacement

NI myDAQ has a fuse to protect the device from overcurrent through HI (A) current measurement input on the DMM. If the DMM soft front panel (SFP) always reads 0 A current, the cause may be a blown fuse.

Testing Your Fuse

To test for a blown fuse, complete the following steps.

1. Using a banana cable, connect the HI (V) and HI (A) DMM terminals.
2. Launch the NI ELVISmx Digital Multimeter (DMM) Soft Front Panel instrument from the NI ELVISmx Instrument Launcher, located at **Start»All Programs»National Instruments»NI ELVISmx for NI ELVIS & NI myDAQ»NI ELVISmx Instrument Launcher**.
3. Select the **Resistance** mode.
4. Set the Range to **200 Ω**.
5. Click **Run**.
6. If the fuse is blown, the display will show **+Over**, indicating a disconnected circuit path. Replace the fuse and complete the procedure again.



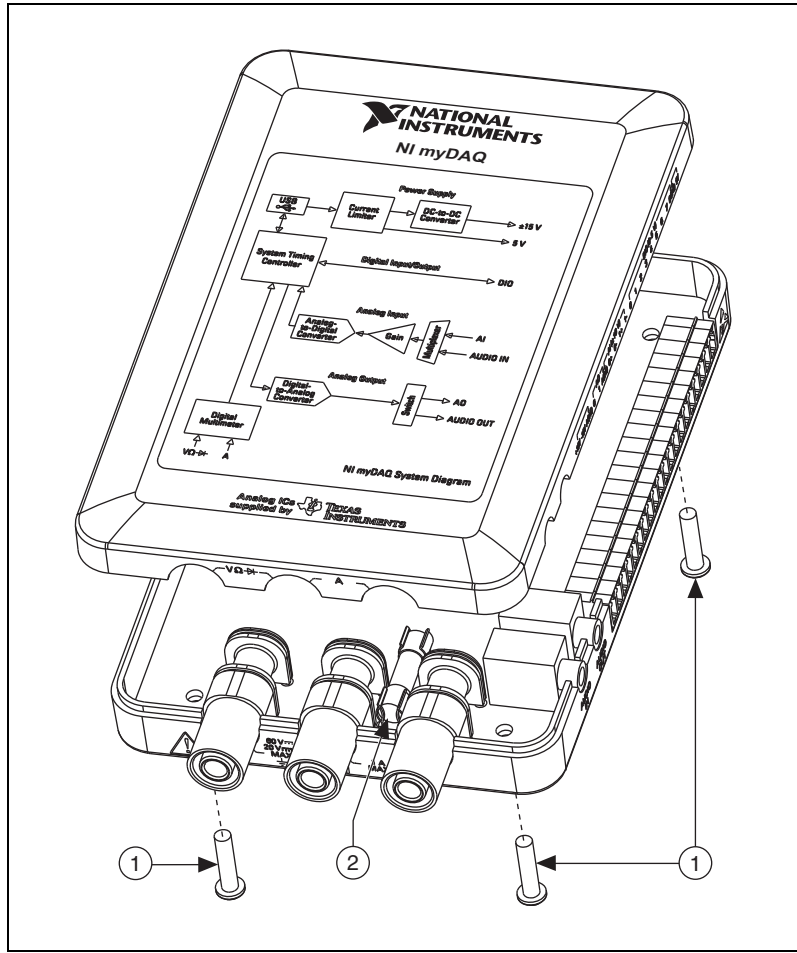
Replacing the Fuse

Replace broken fuses with a 1.25 A Fast-Acting 5X20 fuse (Littelfuse part number 02161.25 at www.littelfuse.com).

To replace a broken fuse, complete the following steps.

1. Power down the device by properly disconnecting it from the PC and removing the USB cable.
2. Remove the screw terminal connector and all other signal cables from the device.
3. Loosen the four Phillips screws that attach the bottom of the enclosure to the device, and remove the top lid of the enclosure.

- Replace the broken fuse while referring to Figure 10 for the fuse location.



- Enclosure Screws
- Internal Fuse—1.25 A Fast-Acting (Littelfuse Part Number 02161.25)

Figure 10. NI myDAQ Fuse Location

- Replace the lid and screws.

Digital I/O (DIO) and Counters/Timers

There are eight, software-timed DIO lines on the NI myDAQ that can be individually configured for input or output. Additionally, lines DIO <0..4> can be configured for counter/timer functionality. The input—accessed through DIO 0, DIO 1, and DIO 2 signals configured as a counter—is used for counter, timer, pulse width measuring, and quadrature encoding applications.

When using the counter/timer, the Source is accessed through DIO 0, the Gate through DIO 1, the Auxiliary Input through DIO 2, the Output through DIO 3, and the Frequency Output through DIO 4. When using the counter/timer as a quadrature encoder, A, Z, and B correspond to DIO 0, DIO 1, and DIO 2, respectively. In some instances, the software may refer to the output lines as PFI as opposed to DIO. Refer to Table 3 for a list of the corresponding counter/timer signals assignments through the DIO terminals.

Table 3. NI myDAQ Counter/Timer Signal Assignments

NI myDAQ Signal	Programmable Function Interface (PFI)	Counter/Timer Signal	Quadrature Encoder Signal
DIO 0	PFI 0	CTR 0 SOURCE	A
DIO 1	PFI 1	CTR 0 GATE	Z
DIO 2	PFI 2	CTR 0 AUX	B
DIO 3*	PFI 3	CTR 0 OUT	—
DIO 4	PFI 4	FREQ OUT	—

* Pulse-width modulation (PWM) pulse train measurements are generated through DIO 3

For more information about event timing requirements, refer to the [Specifications](#) section. For more detailed information on using counter/timers with NI myDAQ, refer to the KnowledgeBase document *How Do I Use the NI myDAQ Counter?*. To access this document, go to ni.com/info and enter the Info Code `mydaqcounter`.

Using NI myDAQ with Soft Front Panel (SFP) Instruments



Note Before opening a SFP, make sure that the NI myDAQ device is connected to the system and is ready to use. After the NI myDAQ is connected to the system, the blue LED lights, indicating the device is ready for use, and the NI ELVISmx Instrument Launcher launches automatically.

NI ELVISmx provides soft front panel (SFP) instruments, created in LabVIEW, and the source code for the instruments. You cannot directly modify the executable files, but you can modify or enhance the functionality of these instruments by modifying the LabVIEW code, which is located at `C:\Documents and Settings\All Users\Shared Documents\National Instruments\NI ELVISmx Source Code`.



Note For a detailed explanation of the SFP instruments and instructions for taking a measurement with each instrument, refer to the *NI ELVISmx Help*. To access this help file, go to **Start»All Programs»National Instruments»NI ELVISmx for NI ELVIS & NI myDAQ»NI ELVISmx Help**.

NI ELVISmx Instrument Launcher

The NI ELVISmx Instrument Launcher provides access to the NI ELVISmx SFP instruments. When you install the NI myDAQ device, the NI ELVISmx Instrument Launcher automatically opens. To manually open the Instrument Launcher, navigate to **Start»All Programs»National Instruments»NI ELVISmx for NI ELVIS & NI myDAQ»NI ELVISmx Instrument Launcher**. This opens the suite of LabVIEW SFP instruments.



Figure 11. NI ELVISmx Instrument Launcher

To launch an instrument, click the button corresponding to the desired instrument. Select the NI myDAQ device from the **Device** control.

Some instruments perform similar operations using the same resources of the NI myDAQ hardware and therefore cannot run at the same time. If you launch two instruments with overlapping functionality that cannot run at the same time, the NI ELVISmx software generates an error dialog describing the conflict. The instrument with the error is disabled and will not function until the conflict is resolved. For information about possible resource conflicts, refer to the [Resource Conflicts](#) section.

Digital Multimeter (DMM)

NI ELVISmx Digital Multimeter (DMM) is a stand-alone instrument that controls the basic DMM capabilities of NI myDAQ. This commonly used instrument can perform the following types of measurements:

- Voltage (DC and AC)
- Current (DC and AC)
- Resistance
- Diode test
- Audible continuity

Make connections for measurements to the DMM banana jacks on the device. This instrument has the following measurement parameters:

- DC voltage: 60 V, 20 V, 2 V, and 200 mV ranges
- AC voltage: 20 V, 2 V, and 200 mV ranges
- DC current: 1 A, 200 mA, and 20 mA ranges
- AC current: 1 A, 200 mA, and 20 mA ranges
- Resistance: 20 M Ω , 2 M Ω , 200 k Ω , 20 k Ω , 2 k Ω , and 200 Ω ranges
- Diode: 2 V range
- Resolution (number of significant digits for display): 3.5

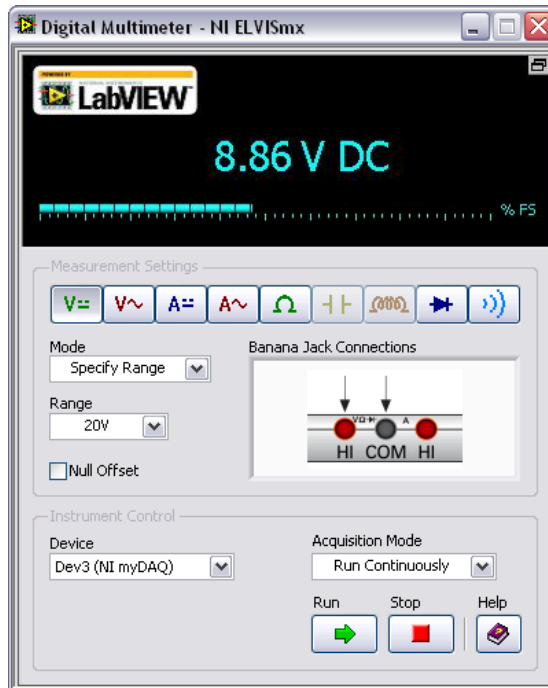


Figure 12. NI ELVISmx Digital Multimeter SFP

Oscilloscope (Scope)

The NI ELVISmx Oscilloscope (Scope) displays voltage data for analysis. This instrument provides the functionality of the standard desktop oscilloscope found in typical undergraduate laboratories. The NI ELVISmx Oscilloscope SFP has two channels and provides scaling and position adjustment knobs along with a modifiable timebase. The autoscale feature allows you to adjust the voltage display scale based on the peak-to-peak voltage of the AC signal for the best display of the signal.

The computer-based scope display has the ability to use cursors for accurate screen measurements. This instrument has the following measurement parameters:

- Channel Source: Channels AI 0 and AI 1; AudioInput Left, and AudioInput Right. You can use AI channels or AudioInput channels, but not a combination of both.
- Coupling: AI Channels support DC Coupling only. AudioInput Channels support AC Coupling only.
- Scale Volts/Div: AI channels—5 V, 2 V, 1 V, 500 mV, 200 mV, 100 mV, 50 mV, 20 mV, 10 mV and for AudioInput Channels—1 V, 500 mV, 200 mV, 100 mV, 50 mV, 20 mV, 10 mV.
- Sample Rate: The Max Sample Rate available for AI and AudioInput Channels: 200 kS/s when either one or both channels are configured.
- Timebase Time/Div: The available values for both AI and AudioInput channels: 200 ms to 5 μ s.
- Trigger settings: Immediate and Edge Trigger Types are supported. When using Edge Trigger Type, you can specify a Horizontal Position of 0%–100%.

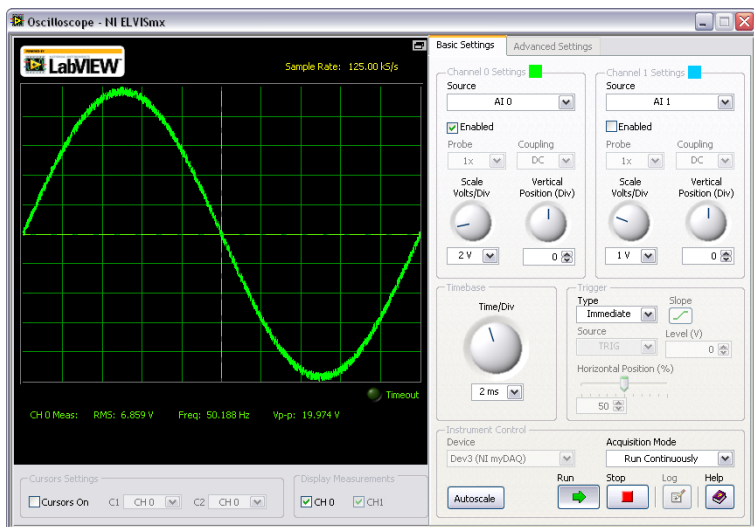


Figure 13. NI ELVISmx Oscilloscope SFP

Function Generator (FGEN)

The NI ELVISmx Function Generator (FGEN) generates standard waveforms with options for the type of output waveform (sine, square, or triangle), amplitude selection, and frequency settings. In addition, the instrument offers DC offset setting, frequency sweep capabilities, and amplitude and frequency modulation. The FGEN uses AO 0 on the screw terminal connector.

This instrument has the following measurement parameters:

- Output channel: AO 0
- Frequency range: 0.2 Hz to 20 kHz

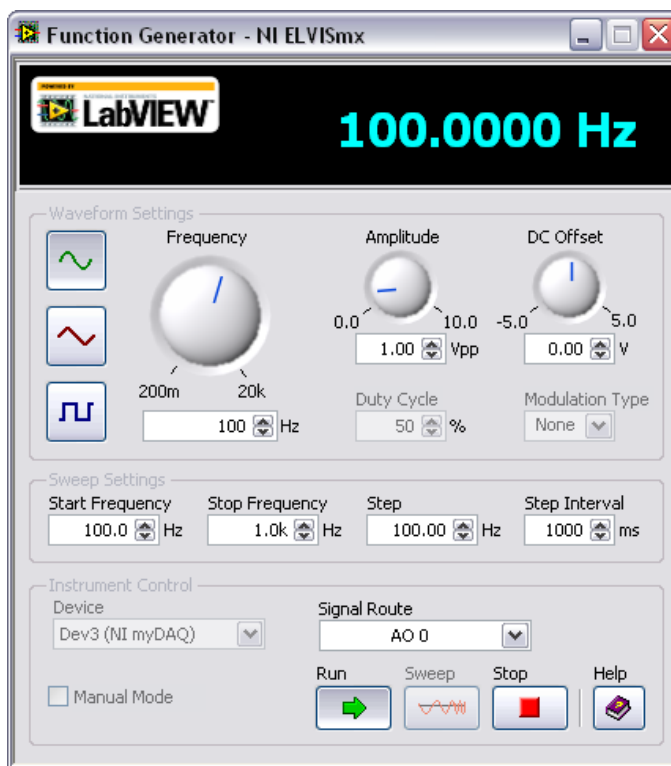


Figure 14. NI ELVISmx Function Generator SFP

Bode Analyzer

The NI ELVISmx Bode Analyzer produces a Bode plot for analysis. By combining the frequency sweep feature of the function generator and the analog input capability of the device, a full-function Bode Analyzer is available with NI ELVISmx. You can set the frequency range of the instrument and choose between linear and logarithmic display scales. You can also invert the measured values of the input signal during Bode analysis by inverting the Op-Amp signal polarity. Refer to the *NI ELVISmx Help* for required hardware connections. To access this help file, go to **Start» All Programs»National Instruments»NI ELVISmx for NI ELVIS & NI myDAQ»NI ELVISmx Help**.

This instrument has the following measurement parameters:

- Stimulus measurement channel: AI 0
- Response measurement channel: AI 1
- Stimulus signal source: AO 0
- Frequency range: 1 Hz to 20 kHz

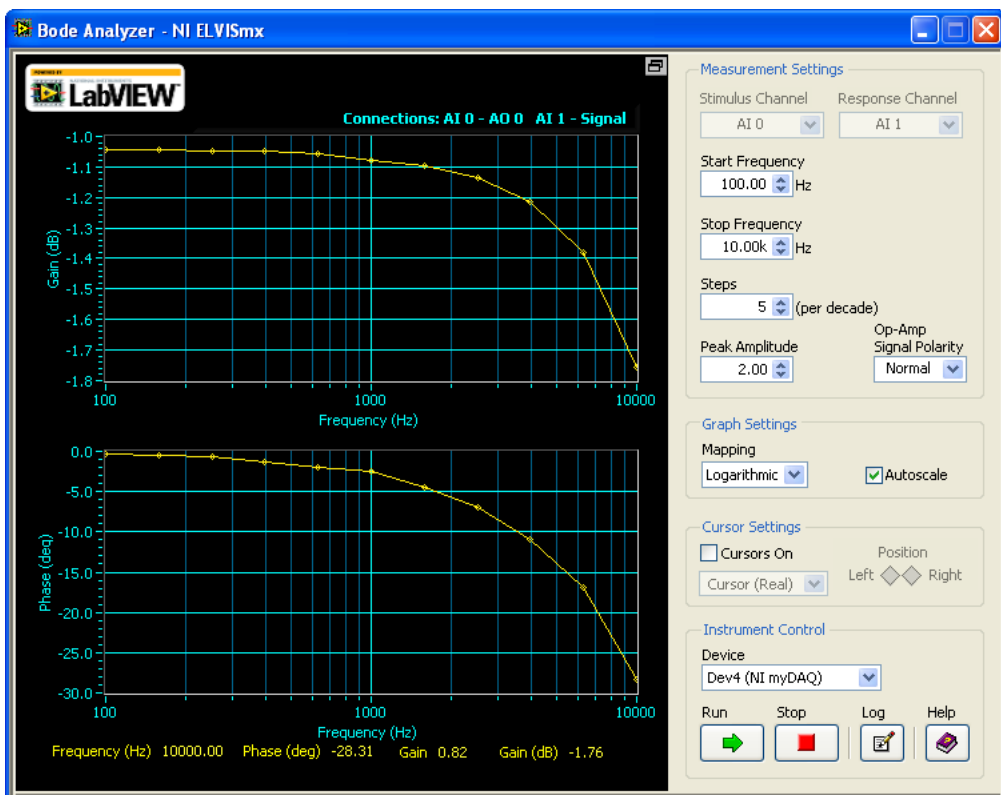


Figure 15. NI ELVISmx Bode Analyzer SFP

Dynamic Signal Analyzer (DSA)

The NI ELVISmx Dynamic Signal Analyzer (DSA) performs a frequency domain transform of the AI or Audio Input waveform measurement. It can either continuously make measurements or make a single scan. You can also apply various window and filtering options to the signal.

This instrument has the following measurement parameters:

- Source Channel: AI 0 and AI 1; AudioInput Left and AudioInput Right
- Voltage Range:
 - For AI channels: ± 10 V, ± 2 V
 - For AudioInput channels: ± 2 V

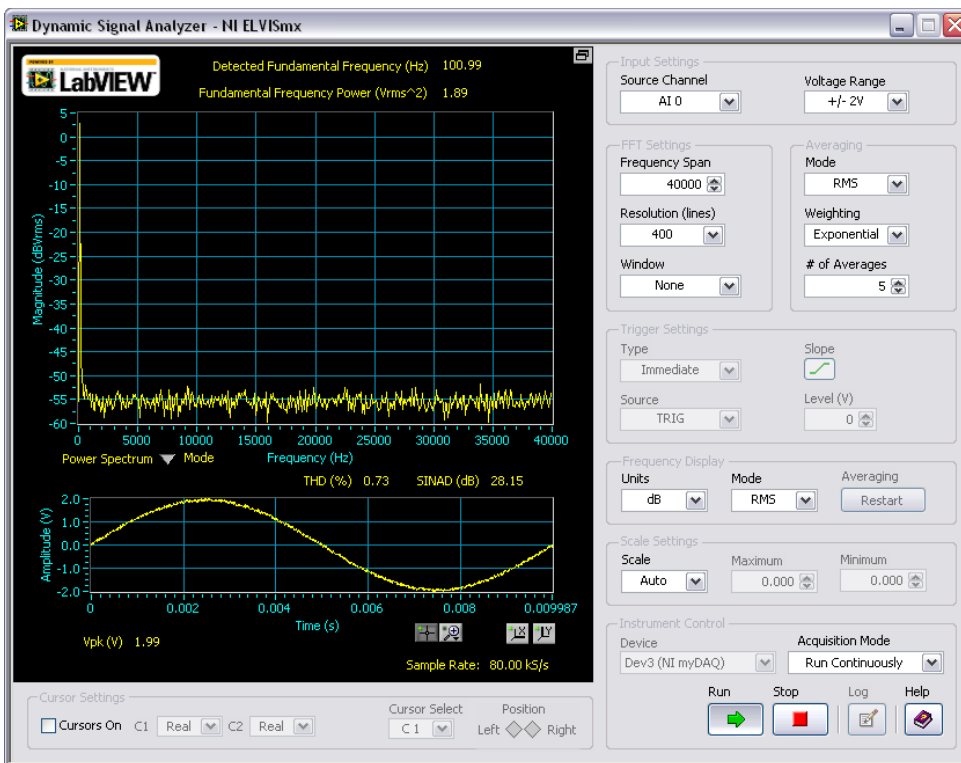


Figure 16. NI ELVISmx Dynamic Signal Analyzer SFP

Arbitrary Waveform Generator (ARB)

The NI ELVISmx Arbitrary Waveform Generator (ARB) generates a signal, displayed as an electrical waveform. This advanced-level SFP instrument uses the AO capabilities of the device. You can create a variety of signal types using the Waveform Editor software, which is included with the NI ELVISmx software. You can load waveforms created with the NI Waveform Editor into the ARB SFP to generate stored waveforms. Refer to the *NI ELVISmx Help* for more information about the Waveform Editor. To access this help file, go to **Start»All Programs»National Instruments»NI ELVISmx for NI ELVIS & NI myDAQ»NI ELVISmx Help**.

Since the device has two AO and two AudioOutput channels, two waveforms may be simultaneously generated. You can choose to run continuously or run once. This instrument has the following measurement parameters:

- Output Channels: AO 0 and AO 1; AudioOutput Left and AudioOutput Right. You can use AO channels or AudioOutput channels, but not a combination of both.
- Trigger Source: Immediate only. This control will always be disabled.

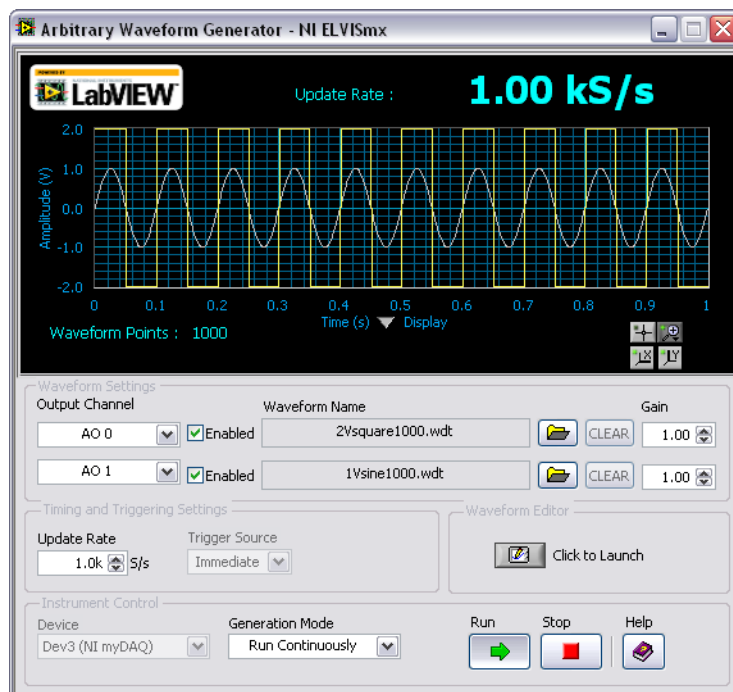


Figure 17. NI ELVISmx Arbitrary Waveform Generator SFP

Digital Reader

The NI ELVISmx Digital Reader reads digital data from the NI myDAQ digital lines. NI ELVISmx Digital Reader groups the I/O lines into ports through which data can be read. You can read one port at a time, either continuously or as a single reading. The lines are grouped into two ports of four pins (0–3 and 4–7) or one port of eight pins (0–7).



Figure 18. NI ELVISmx Digital Reader SFP

Digital Writer

The ELVISmx Digital Writer updates the NI myDAQ digital lines with user-specified digital patterns. NI ELVISmx Digital Writer groups the I/O lines into ports through which data can be written. You can write a 4-bit pattern (0–3 or 4–7) or an 8-bit pattern (0–7). You can also manually create a pattern or select predefined patterns, such as ramp, toggle, or walking 1s. This instrument can control a port of four or eight consecutive lines and either continually output a pattern or just perform a single write.

The output of the NI ELVISmx Digital Writer SFP stays latched until either another pattern is generated, the lines it is using are configured for read, or the power is cycled on the NI myDAQ.

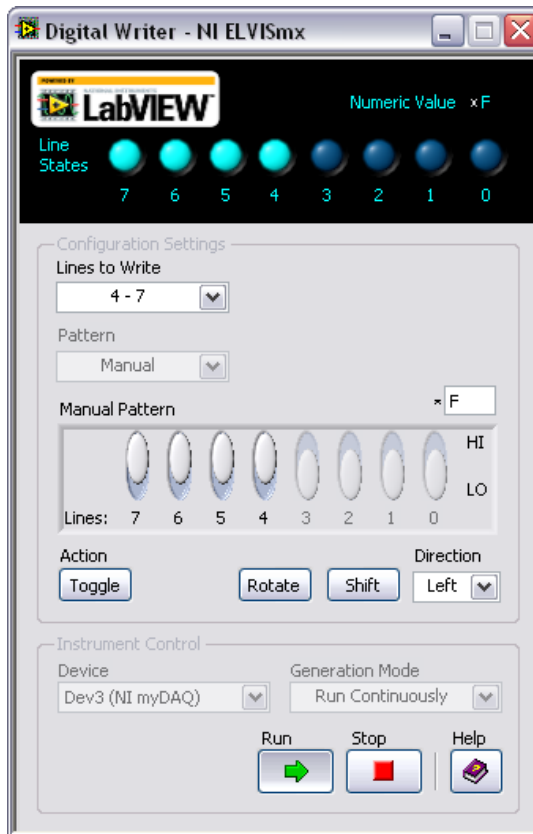


Figure 19. NI ELVISmx Digital Writer SFP

Example: Measuring a Signal Using the NI ELVISmx Oscilloscope SFP with NI myDAQ

Complete the following steps to measure a signal with the NI ELVISmx Scope SFP.



Note Before opening a SFP, make sure that the NI myDAQ device is connected to the system and is ready to use. After the NI myDAQ is connected to the system, the blue LED lights, indicating the device is ready for use.

1. Connect the signal(s) you want to measure to the connector(s) on the side of the NI myDAQ device.
2. Launch the NI ELVISmx Scope SFP from the NI ELVISmx Instrument Launcher.
3. Click **Run**. You should see the signal in the Display Window.
4. If necessary, adjust the controls to stabilize the signal in the graph. Adjust the Time/Div, Vertical Position, Scale, and other controls as desired.

Using NI myDAQ with LabVIEW


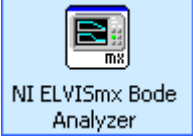





This section provides an overview of using NI myDAQ with LabVIEW.

NI ELVISmx Express VIs in LabVIEW

With NI ELVISmx, the NI myDAQ instruments have an associated LabVIEW Express VI. Express VIs allow you to interactively configure the settings for each instrument. This enables you to develop LabVIEW applications without extensive programming expertise. To access the NI ELVISmx Express VIs, open a LabVIEW block diagram and select **Measurement I/O»NI ELVISmx** from the function palette.

Table 4 shows the available NI ELVISmx Express VIs. Refer to the *NI ELVISmx Help* for more information. To access this help file, go to **Start»All Programs»National Instruments»NI ELVISmx for NI ELVIS & NI myDAQ»NI ELVISmx Help**.

Table 4. NI ELVISmx Express VIs for NI myDAQ

NI ELVISmx Express VI			
 <p>NI ELVISmx Arbitrary Waveform Generator</p>	 <p>NI ELVISmx Bode Analyzer</p>	 <p>NI ELVISmx Digital Reader</p>	 <p>NI ELVISmx Digital Writer</p>
 <p>NI ELVISmx Digital Multimeter</p>	 <p>NI ELVISmx Function Generator</p>	 <p>NI ELVISmx Oscilloscope</p>	<p>—</p>

Example: Measuring Signals Using the NI ELVISmx Oscilloscope Express VI with NI myDAQ

Complete the following steps to use the NI ELVISmx Oscilloscope to measure a signal.



Note For more information on grounding the signals, refer to the [Connecting Analog Input Signals](#) section.

1. Launch LabVIEW.



Tip You can also open the block diagram from the VI front panel by pressing <Ctrl-E>.

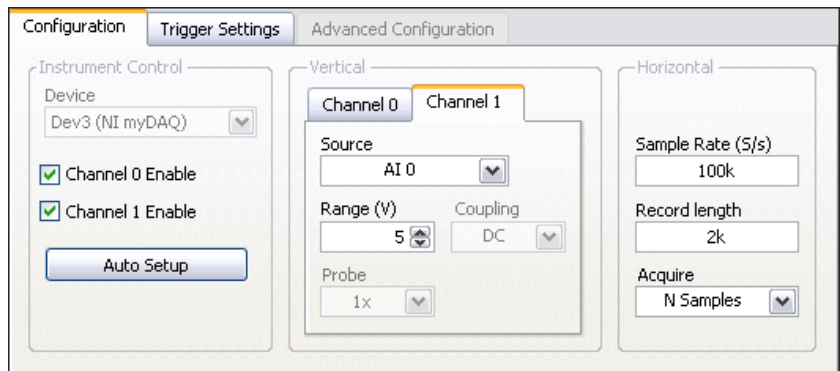
2. In the **Getting Started** window, click **Blank VI**. A blank VI opens. Select **Window»Show Block Diagram** to open the VI block diagram.



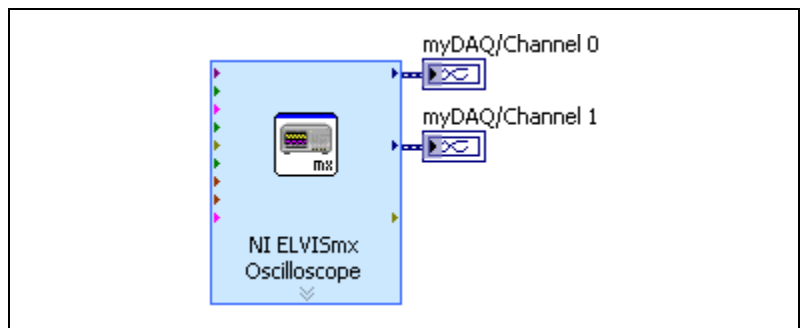
Tip To open the ELVISmx Express VI palette, right-click the block diagram window to open the Functions palette, and select **Measurement I/O»NI ELVISmx**.

3. Select the NI ELVISmx Oscilloscope Express VI from the VI palette and place it on the block diagram. The NI ELVISmx Oscilloscope configuration window opens.

- Connect the signal(s) you want to measure to the connector(s) on the side of the NI myDAQ device.
- On the **Configuration** tab of the configuration window, select to measure Channel 0, Channel 1, or both. Select the **Channel 0 Enable** checkbox to measure Channel 0. Select the **Channel 1 Enable** checkbox to measure Channel 1. Select the **Channel 0 Enable** and **Channel 1 Enable** checkboxes to measure both channels.
- If necessary, click the **Auto Setup** button to automatically configure the oscilloscope parameters to acquire the signal, or explicitly set the **Sample Rate** and **Record Length**. You can also configure the measurement to acquire **N samples** or acquire **Continuously**. If necessary, adjust the controls to stabilize the signal in the graph.

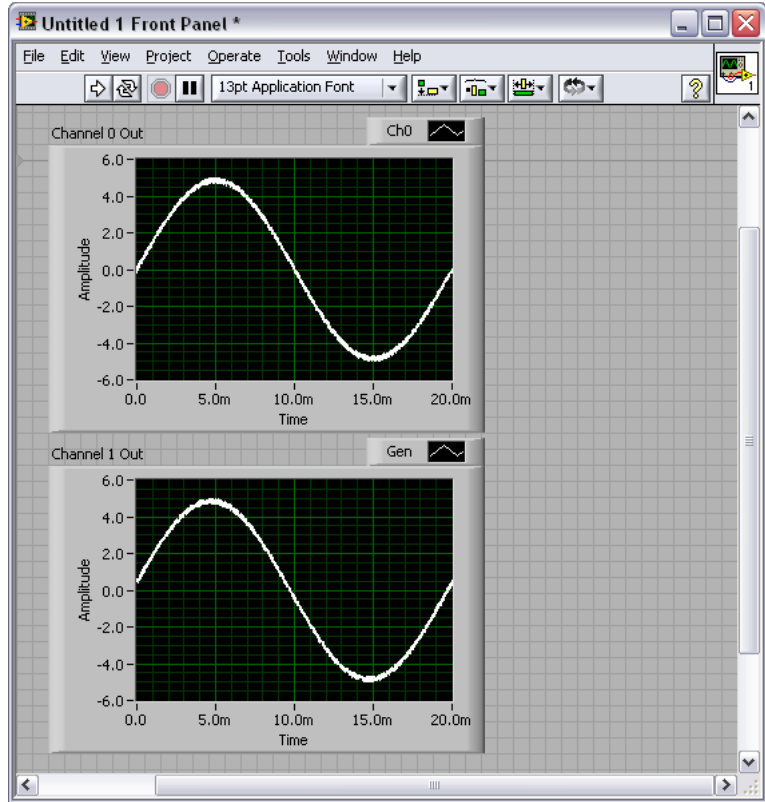


- Click **OK** on the configuration window front panel.
- On the block diagram, right-click the **Channel 0** output terminal and select **Create»Graph Indicator** from the menu. This creates a Graph Indicator on the VI front panel to display the signal data. Repeat this step for Channel 1 if you configured the NI ELVISmx Oscilloscope Express VI to enable Channel 1.





- Click the **Run** button to begin acquiring the measurement. You should see the signal(s) in the graphs on the VI front panel.



Using NI-DAQmx with NI myDAQ

NI myDAQ is supported by NI-DAQmx, and therefore you can program it using the DAQ Assistant Express VI. Figure 20 shows the DAQ Assistant Express VI.

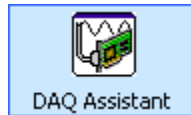


Figure 20. DAQ Assistant Express VI



Note In NI-DAQmx, DIO <0..7> appear as P0.<0..7>.

Furthermore, you can use NI-DAQmx to program some of the available general AI, AO, and timing functionality of the device. Refer to the *NI ELVISmx Help* and *NI-DAQmx Help* for more information.



Note When using NI-DAQmx to read the audio channels, you must manually change the voltage range to ± 2 V from the default voltage range of ± 10 V. The ± 10 V range is not supported by NI-DAQmx and will cause an NI-DAQmx error, but it will not cause the user to receive corrupt data.

Example: Measuring Audio Pass-Through in LabVIEW with NI myDAQ

This example covers the simultaneous acquisition of input signals and generation of output signals using the DAQ Assistant in LabVIEW. This example forms the foundation for audio signal processing experimentation.

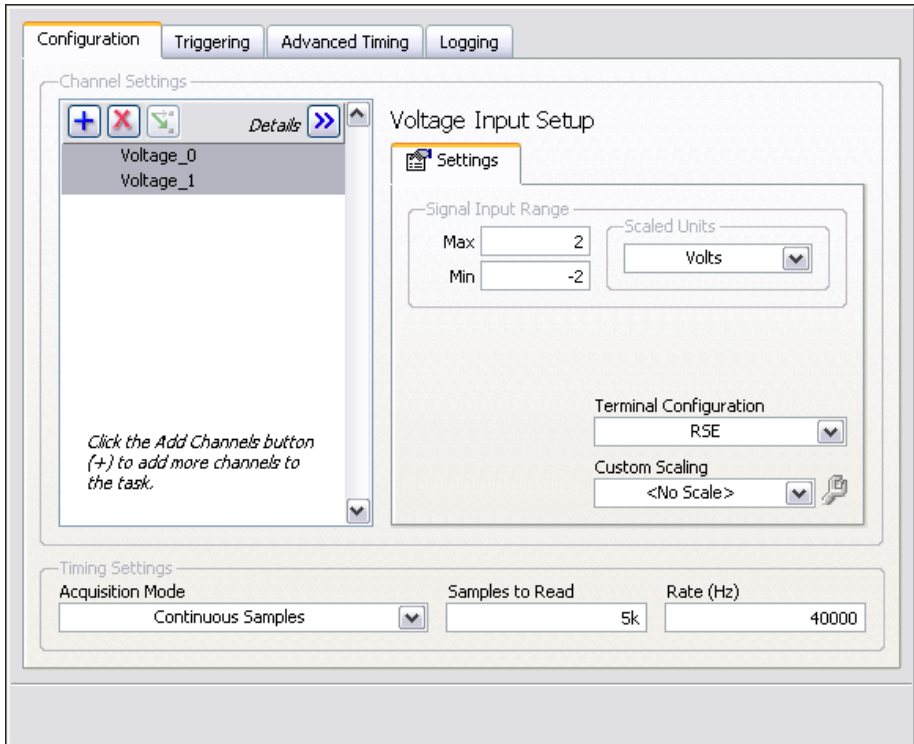
1. Launch LabVIEW.
2. In the **Getting Started** window, click **Blank VI**. A blank VI opens. Select **Window»Show Block Diagram** to open the VI block diagram.
3. Locate the DAQ Assistant Express VI by right-clicking the block diagram window and selecting **Measurement I/O»NI DAQmx»DAQ Assist** from the **Functions** palette.
4. Place the DAQ Assistant Express VI on the block diagram. The DAQ Assistant **Create New Express Task** configuration window opens.



Tip You can also use the Quick Drop dialog box to locate the DAQ Assistant Express VI. Select **View»Quick Drop** or press the <Ctrl-Space> keys to display this dialog box.

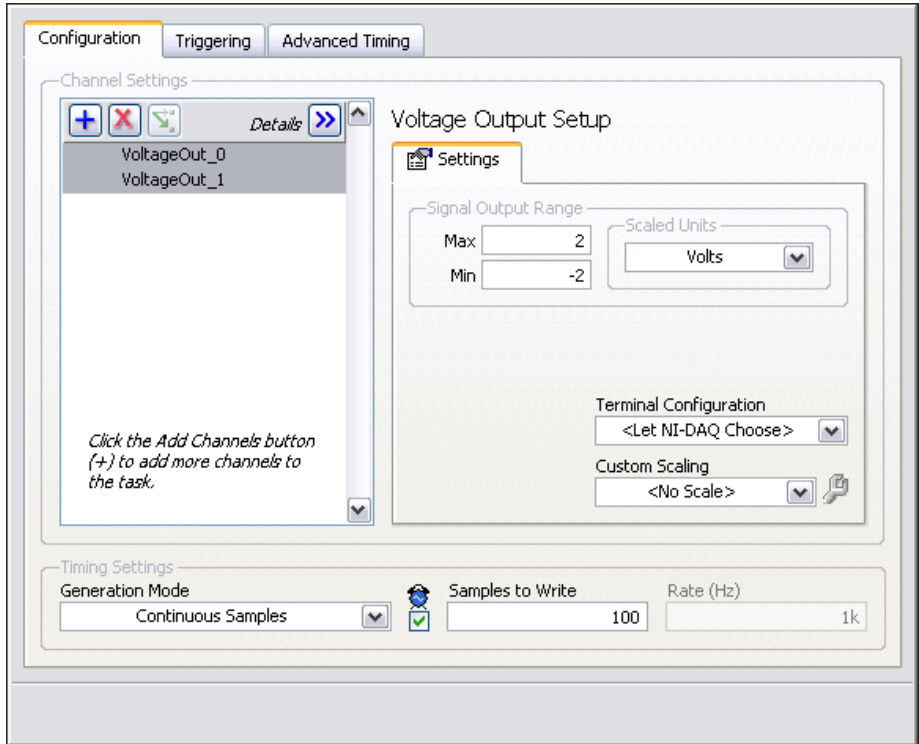
5. In the DAQ Assistant configuration window, select **Acquire Signals»Analog Input**, and click **Voltage** to select a Voltage task.
6. In the **Supported Physical Channels** window, select **audioInputLeft**. You can also press <Ctrl> while clicking **audioInputRight** to select both channels.
7. Click **Finish** to exit the Create New Express Task dialog.
8. On the **Configuration** tab of the DAQ Assistant front panel window, configure voltage channel 0 by selecting **Voltage_0** in the **Channel Settings** pane, and setting **Max** to 2 and **Min** to -2 in the **Signal Input Range** pane. Repeat this step for voltage channel 1 if you configured the task for two channels.

- Under **Timing Settings**, set **Acquisition Mode** to **Continuous Samples**. Enter 5000 in **Samples to Read**, and 40000 in **Rate (Hz)**.



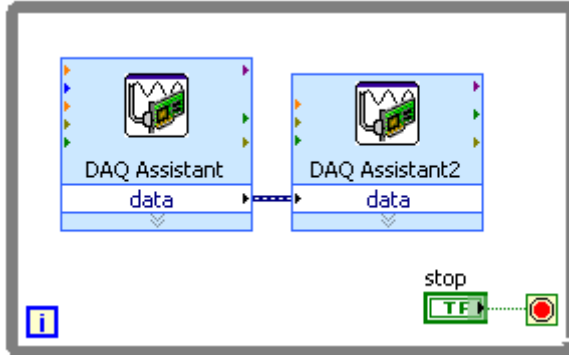
- Click **OK** to exit the DAQ Assistant configuration front panel. The VI builds. Click **No** on the dialog box that displays.
- Place another DAQ Assistant Express VI to the right of the previously configured DAQ Assistant Express VI on the block diagram. The DAQ Assistant **Create New Express Task** configuration window opens.
- In the DAQ Assistant configuration window, select **Generate Signals» Analog Output**, and click **Voltage** to select a Voltage task.
- In the **Supported Physical Channels** window, select **audioOutputLeft** from under the Devx (NI myDAQ) option. You can also press <Ctrl> while clicking **audioOutputRight** to select both channels.
- Click **Finish** to exit the Create New Express Task dialog.
- On the **Configuration** tab of the DAQ Assistant front panel window, configure voltage channel 0 by selecting **VoltageOut_0** in the **Channel Settings** pane, and setting **Max** to 2 and **Min** to -2 in the **Signal Input Range** pane. Repeat this step for voltage channel 1 if you configured the task for two channels.

- Under **Timing Settings**, set **Generation Mode** to **Continuous Samples**.



- Click **OK** to exit the DAQ Assistant configuration front panel. The VI builds. Click **No** on the dialog box that displays.
- Wire the **data** output terminal of the first DAQ Assistant Express VI to the **data** input terminal of the second DAQ Assistant Express VI.
- Add a While Loop to the block diagram by right-clicking the block diagram window and selecting **Programming»Structures»While Loop** from the **FUNCTIONS** palette, and drag out a rectangular region to enclose both DAQ Assistant Express VIs.

20. Add a STOP control to your front panel by right-clicking the **STOP** button and selecting **Create Control**.



21. Click the run button to test your LabVIEW application.
22. Attach a music player to the AUDIO IN 3.5 mm jack, and connect speakers to the AUDIO OUT jack. You should hear the music on the speakers. If you do not hear sound, test the speakers on the music player to make sure there is sound playing and that the speakers are functioning properly.

This example provides the basis for audio measurement. Experiment further by placing digital signal processing steps such as filters between the input and output.

Specifications

Performance is typical after a three-minute warmup, at 23 °C unless otherwise specified. This document may not contain the most recent published specifications. To get the most recent edition of this document, go to ni.com/manuals and enter **mydaq** into the **Search** field.

Analog Input

Number of channels.....	2 differential or 1 stereo audio input
ADC resolution.....	16 bits
Maximum sampling rate.....	200 kS/s
Timing accuracy	100 ppm of sample rate
Timing resolution	10 ns

Range

Analog input ± 10 V, ± 2 V, DC-coupled

Audio input ± 2 V, AC-coupled

Passband (-3 dB)

Analog input DC to 400 kHz

Audio input 1.5 Hz to 400 kHz

Connector type

Analog input Screw terminals

Audio input 3.5 mm stereo jack

Input type (audio input)..... Line-in or microphone

Microphone excitation (audio input)..... 5.25 V through 10 k Ω

Absolute accuracy

Nominal Range		Typical at 23 °C (mV)	Maximum (18 to 28 °C) (mV)
Positive Full Scale	Negative Full Scale		
10	-10	22.8	38.9
2	-2	4.9	8.6

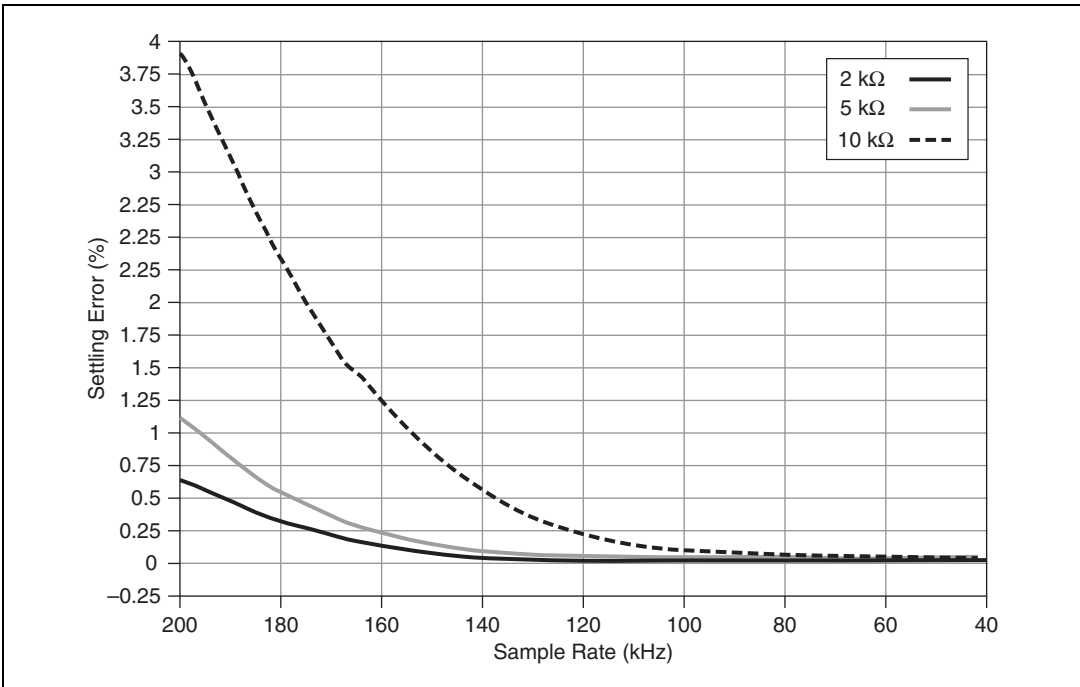


Figure 21. Settling Time (10 V Range) versus Different Source Impedance

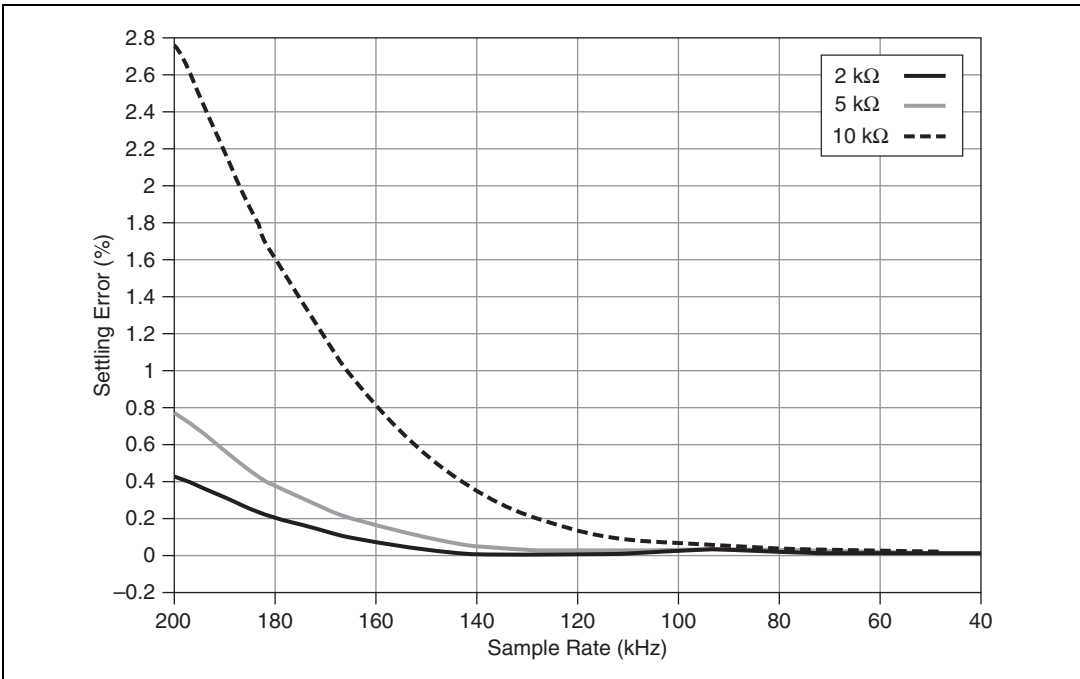


Figure 22. Settling Time (2 V Range) versus Different Source Impedance

Input FIFO size	4,095 samples, shared among channels used
Maximum working voltage for analog inputs (signal + common mode).....	± 10.5 V to AGND
Common-mode rejection ratio (CMRR) (DC to 60 Hz)	70 dB
Input impedance	
Device on	
AI+ or AI- to AGND.....	>10 G Ω 100 pF
AI+ to AI-	>10 G Ω 100 pF
Device off	
AI+ or AI- to AGND.....	5 k Ω
AI+ to AI-	10 k Ω
Anti-aliasing filter	None
Overvoltage protection	
AI+ or AI - to AGND.....	± 16 V
Overvoltage protection (audio input left and right).....	None

Analog Output

Number of channels	2 ground-referenced or 1 stereo audio output
DAC resolution	16 bits
Maximum update rate	200 kS/s
Range	
Analog output	± 10 V, ± 2 V, DC-coupled
Audio output	± 2 V, AC-coupled
Maximum output current (analog output) ¹	2 mA

¹ The total power available for the power supplies, analog outputs, and digital outputs is limited to 500 mW (typical)/100 mW (minimum). Refer to the [NI myDAQ Hardware Overview](#) section for information on calculating the total power consumption of the components of your system.

Output impedance
 Analog output 1 Ω
 Audio output 120 Ω

Minimum load impedance
 (audio output) 8 Ω

Connector type
 Analog output Screw terminals
 Audio output 3.5 mm stereo jack

AC-coupling high-pass frequency
 (audio output with 32 Ω load) 48 Hz

Absolute accuracy

Nominal Range		Typical at 23 °C (mV)	Maximum (18 to 28 °C) (mV)
Positive Full Scale	Negative Full Scale		
10	-10	19.6	30.9
2	-2	5.4	8.8

Slew rate 4 V/ μ s

Timing accuracy 100 ppm of sample rate

Timing resolution 10 ns

Overdrive protection \pm 16 V to AGND

Maximum power-on voltage¹ \pm 110 mV

Output FIFO size 8,191 samples, shared among
 channels used

Digital I/O

Number of lines 8; DIO <0..7>

Direction control Each line individually
 programmable as input or output

Update mode Software-timed

Pull-down resistor 75 k Ω

¹ When powered on, the analog output signal is not defined until after USB configuration is complete.

Logic level.....	5 V compatible LVTTL input; 3.3 V LVTTL output
V _{IH} min.....	2.0 V
V _{IL} max	0.8 V
Maximum output current per line ¹	4 mA

General Purpose Counter/Timer

Number of counter/timers	1
Resolution	32 bits
Internal base clocks	100 MHz
Base clock accuracy	100 ppm
Maximum counting and pulse generation frequency	1 MHz
Default routing	
CTR 0 SOURCE	PFI 0 routed through DIO 0
CTR 0 GATE	PFI 1 routed through DIO 1
CTR 0 AUX	PFI 2 routed through DIO 2
CTR 0 OUT	PFI 3 routed through DIO 3
FREQ OUT	PFI 4 routed through DIO 4
Data transfers	Programmed I/O
Update mode	Software-timed

Digital Multimeter

Functions ²	DC voltage, AC voltage, DC current, AC current, resistance, diode, continuity
Isolation level	60 VDC/20 V _{rms} , Measurement Category I

¹ The total power available for the power supplies, analog outputs, and digital outputs is limited to 500 mW (typical)/100 mW (minimum). Refer to the [NI myDAQ Hardware Overview](#) section for information on calculating the total power consumption of the components of your system.

² All AC specifications are based on sine wave RMS.



Caution Do *not* use this device for connection to signals or for measurements within Measurement Categories II, III, or IV. For more information on Measurement Categories, refer to the *Safety Voltages* section.

Connectivity.....Banana jacks
 Resolution.....3.5 digits
 Input coupling.....DC (DC Voltage, DC Current, Resistance, Diode, Continuity);
 AC (AC Voltage, AC Current)

Voltage Measurement

DC ranges200 mV, 2 V, 20 V, 60 V
 AC ranges200 mV_{rms}, 2 V_{rms}, 20 V_{rms}

Accuracy

Function	Range	Resolution	Accuracy	
			± ([% of Reading] + Offset)	
DC Volts	200.0 mV	0.1 mV	0.5% + 0.2 mV	
	2.000 V	0.001 V	0.5% + 2 mV	
	20.00 V	0.01 V	0.5% + 20 mV	
	60.0 V	0.1 V	0.5% + 200 mV	
			40 to 400 Hz	400 to 2,000 Hz
AC Volts	200.0 mV	0.1 mV	1% + 0.15%*	—
	2.000 V	0.001 V	1% + 0.15%	5% + 3 mV
	20.00 V	0.01 V	1% + 0.15%	5% + 30 mV

* The accuracy for AC Volts 200.0 mV range is in the frequency range of 40 Hz to 100 Hz

Input impedance 10 MΩ

Current Measurement

DC ranges20 mA, 200 mA, 1 A
 AC ranges20 mA_{rms}, 200 mA_{rms}, 1 A_{rms}

Accuracy

Function	Range	Resolution	Accuracy	
			± ([% of Reading] + Offset)	
DC Amps	20.00 mA	0.01 mA	1% + 0.02 mA	
	200.0 mA	0.1 mA	0.5% + 0.2 mA	
	1.000 A	0.001 A	0.5% + 2 mA	
			40 to 400 Hz	400 to 2,000 Hz
AC Amps	20.00 mA	0.01 mA	1.5% + 0.03 mA	5.5% + 0.03 mA
	200.0 mA	0.1 mA	1% + 0.3 mA	5% + 0.3 mA
	1.000 A	0.001 A	1% + 3 mA	5% + 3 mA

Input protection Internal ceramic fuse, 1.25 A
 250 V, fast-acting, 5 × 20 mm,
 F 1.25A H 250V
 (Littelfuse part number 02161.25)

Resistance Measurement

Ranges 200 Ω, 2 kΩ, 20 kΩ, 200 kΩ,
 2 MΩ, 20 MΩ

Accuracy

Function	Range	Resolution	Accuracy	
			± ([% of Reading] + Offset)	
Ω	200.0 Ω	0.1 Ω	0.8% + 0.3 Ω*	
	2.000 kΩ	0.001 kΩ	0.8% + 3 Ω	
	20.00 kΩ	0.01 kΩ	0.8% + 30 Ω	
	200.0 kΩ	0.1 kΩ	0.8% + 300 Ω	
	2.000 MΩ	0.001 MΩ	0.8% + 3 kΩ	
	20.00 MΩ	0.01 MΩ	1.5% + 50 kΩ	

* Exclusive of lead wire resistance

Diode Measurement

Range 2 V

Power Supplies



Caution Do *not* mix power from NI myDAQ with power from external power sources. When using external power, remove any connections to the power supply terminals on NI myDAQ.

+15V Supply

Output voltage

Typical (no load)15.0 V

Maximum voltage with no load.....15.3 V

Minimum voltage with full load.....14.0 V

Maximum output current¹.....32 mA

Maximum load capacitance470 μ F

-15V Supply

Output voltage

Typical (no load)-15.0 V

Maximum voltage with no load.....-15.3 V

Minimum voltage with full load.....-14.0 V

Maximum output current¹.....32 mA

Maximum load capacitance470 μ F

+5V Supply

Output voltage

Typical (no load)4.9 V

Maximum voltage with no load.....5.2 V

Minimum voltage with full load.....4.0 V

Maximum output current¹.....100 mA

Maximum load capacitance33 μ F

¹ The total power available for the power supplies, analog outputs, and digital outputs is limited to 500 mW (typical)/100 mW (minimum). Refer to the [NI myDAQ Hardware Overview](#) section for information on calculating the total power consumption of the components of your system.

Communication

Bus interface USB 2.0 Hi-Speed

Physical Characteristics

Dimensions (without screw terminal connector)..... 14.6 cm × 8.7 cm × 2.2 cm
(5.75 in. × 3.43 in. × 0.87 in.)

Weight..... 175.0 g (6.1 oz)

Screw-terminal wiring..... 16 to 26 AWG

Torque for screw terminals 0.22–0.25 N · m (2.0–2.2 lb · in.)

Environmental

The NI myDAQ device is intended for indoor use only.

Operating temperature
(IEC 60068-2-1 and IEC 60068-2-2) 0 to 45 °C

Storage temperature
(IEC 60068-2-1 and IEC 60068-2-2) –20 to 70 °C

Operating humidity
(IEC 60068-2-56)..... 10 to 90% RH, noncondensing

Storage humidity
(IEC 60068-2-56)..... 10 to 90% RH, noncondensing

Maximum altitude 2,000 m (at 25 °C ambient temperature)

Pollution Degree (IEC 60664) 2

Safety

Safety Voltages

Measurement Category I is for measurements performed on circuits not directly connected to the electrical distribution system referred to as *MAINS* voltage. *MAINS* is a hazardous live electrical supply system that powers equipment. This category is for measurements of voltages from specially protected secondary circuits. Such voltage measurements include signal levels, special equipment, limited-energy parts of equipment, circuits powered by regulated low-voltage sources, and electronics.



Caution Do not use this module for connection to signals or for measurements within Measurement Categories II, III, or IV.

Safety Standards

This product is designed to meet the requirements of the following standards of safety for electrical equipment for measurement, control, and laboratory use:

- IEC 61010-1, EN 61010-1
- UL 61010-1, CSA 61010-1



Note For UL and other safety certifications, refer to the product label or the *Online Product Certification* section.

Hazardous Locations

The NI myDAQ device is not certified for use in hazardous locations.

Electromagnetic Compatibility

This product meets the requirements of the following EMC standards for electrical equipment for measurement, control, and laboratory use:

- EN 61326-1 (IEC 61326-1): Class B emissions; Basic immunity
- EN 55011 (CISPR 11): Group 1, Class B emissions
- AS/NZS CISPR 11: Group 1, Class B emissions
- FCC 47 CFR Part 15B: Class B emissions
- ICES-001: Class B emissions



Note For EMC declarations and certifications, refer to the *Online Product Certification* section.

CE Compliance

This product meets the essential requirements of applicable European Directives as follows:

- 2006/95/EC; Low-Voltage Directive (safety)
- 2004/108/EC; Electromagnetic Compatibility Directive (EMC)

Online Product Certification

To obtain product certifications and the Declaration of Conformity (DoC) for this product, visit ni.com/certification, search by model number or product line, and click the appropriate link in the Certification column.

Environmental Management

NI is committed to designing and manufacturing products in an environmentally responsible manner. NI recognizes that eliminating certain hazardous substances from our products is beneficial to the environment and to NI customers.

For additional environmental information, refer to the *NI and the Environment* Web page at ni.com/environment. This page contains the environmental regulations and directives with which NI complies, as well as other environmental information not included in this document.

Waste Electrical and Electronic Equipment (WEEE)



EU Customers The symbol indicates that the waste products should be disposed of separately from municipal household waste according to Directive 2002/96/EC of the European Parliament and the Council on waste electrical and electronic equipment (WEEE). At the end of the product life cycle, all products must be sent to a WEEE collection and recycling center. Proper disposal of WEEE reduces the environmental impact and risk to human health due to potentially hazardous substances that are generally used in such equipment. Your cooperation in the correct disposal of the products will contribute to the effective usage of natural resources. For information about the available collection and recycling scheme in a particular country, refer to <http://www.ni.com/citizenship/weee.htm>.

电子信息产品污染控制管理办法（中国 RoHS）



中国客户 National Instruments 符合中国电子信息产品中限制使用某些有害物质指令 (RoHS)。关于 National Instruments 中国 RoHS 合规性信息，请登录 ni.com/environment/rohs_china。(For information about China RoHS compliance, go to ni.com/environment/rohs_china.)

Texas Instruments Components in NI myDAQ

Integrated circuits supplied by Texas Instruments form the power and analog I/O subsystems of NI myDAQ. Figure 2 depicts the arrangement and function of the NI myDAQ subsystems. Table 5 lists all of the Texas Instruments components used in NI myDAQ. Visit www.ti.com to see the specifications documents for each of the components in the design.

Table 5. Texas Instruments Components in NI myDAQ

Texas Instruments Integrated Circuit (IC)	Part Number	Description
Current-Limited Power Distribution Switch	TPS2553	This is used for applications where precision current limiting is required or heavy capacitive loads and short circuits are encountered.
Regulator	TPS61170	This is a monolithic high-voltage boost regulator with an integrated 1.2 A, 40 V power MOSFET.
Regulator	TPS62007	The TPS6200x devices are a family of low-noise synchronous step-down DC-DC converter that is ideally suited for systems powered from a one-cell Li-ion battery or from a two- to three-cell NiCd, NiMH, or alkaline battery.
Regulator	TPS62003	
LDO Regulator	TPS71501	These are low-dropout (LDO) voltage regulators, offering the benefits of low noise, low-dropout voltage, low-power operation, and miniaturized packages.
LDO Regulator	TPS76433	
Digital Isolator	ISO7241A	This is a quad-channel digital isolator with multiple channel configurations and output enable functions.
Shift Register	SN74AHC595	This device contains an 8-bit serial-in, parallel-out shift register that feeds an 8-bit D-type storage register.
Switch	TS5A23159	This is a dual single-pole double-throw (SPDT) analog switch designed to operate from 1.65 V to 5.5 V.
Operational Amplifier	TLC2262	This is a dual low-noise rail-to-rail operational amplifier.
Operational Amplifier	TL062C	This JFET operational amplifier features high input impedance, wide bandwidth, high slew rate, low input offset, and input bias currents.

Table 5. Texas Instruments Components in NI myDAQ (Continued)

Texas Instruments Integrated Circuit (IC)	Part Number	Description
ADC	ADS8319	This is a 16-bit, 500-kS/s analog-to-digital converter.
DAC	DAC8551	This is a small, low-power, voltage output, 16-bit digital-to-analog converter (DAC).
Reference	REF3025	This is a precision, low power, low voltage dropout voltage reference available in a small SOT23-3.
Tristate Buffer	SN74AHCT1G125	This is a single bus buffer gate/line driver with three-state output.
Voltage Supervisor	TPS3809	This is a supervisory circuit that provides circuit initialization and timing supervision, primarily for DSPs and processor-based systems.
Comparator	TLV3491	This is a push-pull output comparator that features a fast 6 μ s response time and <1.2 μ A (max) nanopower capability, allowing operation from 1.8 V–5.5 V.
NOR Gate	SN74LVC1G02	This single two-input positive NOR gate is designed for 1.65 V–5.5 V V_{CC} operation.
Instrument Amplifier Stage	TLE2082	This is an operational amplifier more than double the bandwidth and triple the slew rate of the TL07x and TL08x families of BiFET operational amplifiers.
Operational Amplifier	OPA1642	This is a JFET-input, ultra-low distortion, low-noise operational amplifier, fully specified for audio applications.
Audio Amplifier	TPA6110A2	This is a stereo audio power amplifier packaged in an eight-pin PowerPAD™ MSOP package capable of delivering 150 mW of continuous RMS power per channel into 16 Ω -loads.
Multiplexer	MPC509AU	This is a four-channel differential multiplexer.

Resource Conflicts

Table 6 summarizes the resource conflicts you might encounter if you run certain NI myDAQ circuitry simultaneously.

To use the information in Table 6, find the instrument you want to use in the left column. That row lists all the functions that are resource conflicts. If the intersecting box contains an —, you can use those functions simultaneously without any conflicts.

Table 6. NI myDAQ Resource Conflicts

	DMM	Scope (AI)	Scope (Audio)	FGEN	Bode	DSA (AI)	DSA (Audio)	Arb (AO)	Arb (Audio)	DI (4 Lines)	DI (8 Lines)	DO (4 Lines)	DO (8 Lines)
DMM	—	—	—	—	—	—	—	—	—	—	—	—	—
Scope (AI)	—	—	✘	—	✘	✘	✘	—	—	—	—	—	—
Scope (Audio)	—	✘	—	—	✘	✘	✘	—	—	—	—	—	—
FGEN	—	—	—	—	✘	—	—	✘	✘	—	—	—	—
Bode	—	✘	✘	✘	—	✘	✘	✘	✘	—	—	—	—
DSA (AI)	—	✘	✘	—	✘	—	✘	—	—	—	—	—	—
DSA (Audio)	—	✘	✘	—	✘	✘	—	—	—	—	—	—	—
Arb (AO)	—	—	—	✘	✘	—	—	—	✘	—	—	—	—
Arb (Audio)	—	—	—	✘	✘	—	—	✘	—	—	—	—	—
DI (4 Lines)	—	—	—	—	—	—	—	—	—	—	—	—	✘
DI (8 Lines)	—	—	—	—	—	—	—	—	—	—	—	✘	✘
DO (4 Lines)	—	—	—	—	—	—	—	—	—	—	✘	—	—
DO (8 Lines)	—	—	—	—	—	—	—	—	—	✘	✘	—	—

— = No resource conflict
✘ = Conflict exists

Additional Resources

The following resources contain information you might find helpful.

Related Documentation

The following documents contain information that you may find helpful as you use this manual.

NI ELVISmx

NI ELVISmx Help—This help file contains information about the NI ELVISmx software, including information on using NI ELVISmx SFP instruments and NI ELVISmx Express VIs. To access this help file, go to **Start»All Programs»National Instruments»NI ELVISmx for NI ELVIS & NI myDAQ»NI ELVISmx Help**.

LabVIEW

- *LabVIEW Help*—This help file includes information about LabVIEW programming concepts, step-by-step instructions for using LabVIEW, and reference information about LabVIEW VIs, functions, palettes, menus, and tools.
- *Getting Started with LabVIEW*—Use this document as a tutorial to familiarize yourself with the LabVIEW graphical programming environment and the basic LabVIEW features you use to build data acquisition and instrument control applications. This document contains exercises that you can use to learn how to develop basic applications in LabVIEW.

Multisim

- *Getting Started with NI Circuit Design Suite*—Follow the tutorial in Chapter 2 of this manual to familiarize yourself with the basics of Multisim.
- *Multisim Help File*—This help file describes Multisim and its functions. It is organized based on the stages of circuit design, and explains all aspects of Multisim in detail. This help file also provides detailed information about using NI ELVISmx instruments in Multisim. The NI ELVISmx information is also found in the *NI Multisim for Education* manual.
- *Using NI ELVISmx Instruments in NI Multisim*—This help file contains tutorials and information on using NI ELVISmx instruments in NI Multisim to simulate data, acquire data from hardware, and compare simulated and acquired data. To access this help file, select **Start»All Programs»National Instruments»ELVISmx»Using NI ELVISmx Instruments in NI Multisim**.

NI-DAQmx

NI-DAQmx Help—This help file explains key NI-DAQmx concepts, describes how to create common applications, and details device-specific information needed to use NI-DAQmx.

Other Resources

ni.com/mydaq—Contains product information, support information, and helpful links to tutorials, examples, curriculum, videos, and more.

Common Terms and Acronyms

Table 7 lists some commonly used acronyms in data acquisition and measurement.

Table 7. Commonly Used Acronyms

Acronym	Definition	Description
ADC	Analog-to-digital converter	Device that converts analog signals into digital data.
AI/AO	Analog input/analog output	A continuous signal that conveys data from physical phenomena such as temperature, strain, pressure, sound, or light.
DAC	Digital-to-analog converter	Device that converts digital code into analog signals.
DAQ	Data acquisition	Measuring an electrical or physical phenomenon such as voltage, current, or temperature using a combination of hardware and software.
DIO	Digital input/output	A non-continuous signal that conveys data in digits or pulses that can be logged as digital data or converted into an analog signal for viewing.
GND	Ground	The ground or earth reference in a circuit.
MIO	Multifunction input/output	The collective term for multiple measurements types, such as AI, AO, DIO, GND, and power signals.
PFI	Programmable Function Interface	A signal that can be configured for different uses, such as a digital input, a digital output, a timing input, or a timing output.
SFP	Soft front panel	The software-based user interface for your NI ELVISmx instrument.
VI	Virtual Instrument	A software program and hardware device that work together to create a user-defined measurement system.

Warranty

The NI myDAQ is warranted against defects in materials and workmanship for a period of one year from the date of shipment, as evidenced by receipts or other documentation. National Instruments will, at its option, repair or replace equipment that proves to be defective during the warranty period. This warranty includes parts and labor.

Where to Go for Support

The National Instruments Web site is your complete resource for technical support. At ni.com/support you have access to everything from troubleshooting and application development self-help resources to email and phone assistance from NI Application Engineers.

A Declaration of Conformity (DoC) is our claim of compliance with the Council of the European Communities using the manufacturer's declaration of conformity. This system affords the user protection for electromagnetic compatibility (EMC) and product safety. You can obtain the DoC for your product by visiting ni.com/certification. If your product supports calibration, you can obtain the calibration certificate for your product at ni.com/calibration.

National Instruments corporate headquarters is located at 11500 North Mopac Expressway, Austin, Texas, 78759-3504. National Instruments also has offices located around the world to help address your support needs. For telephone support in the United States, create your service request at ni.com/support and follow the calling instructions or dial 512 795 8248. For telephone support outside the United States, visit the Worldwide Offices section of ni.com/niglobal to access the branch office Web sites, which provide up-to-date contact information, support phone numbers, email addresses, and current events.

LabVIEW, National Instruments, NI, ni.com, the National Instruments corporate logo, and the Eagle logo are trademarks of National Instruments Corporation. Refer to the *Trademark Information* at ni.com/trademarks for other National Instruments trademarks. Other product and company names mentioned herein are trademarks or trade names of their respective companies. For patents covering National Instruments products/technology, refer to the appropriate location: **Help»Patents** in your software, the `patents.txt` file on your media, or the *National Instruments Patent Notice* at ni.com/patents.