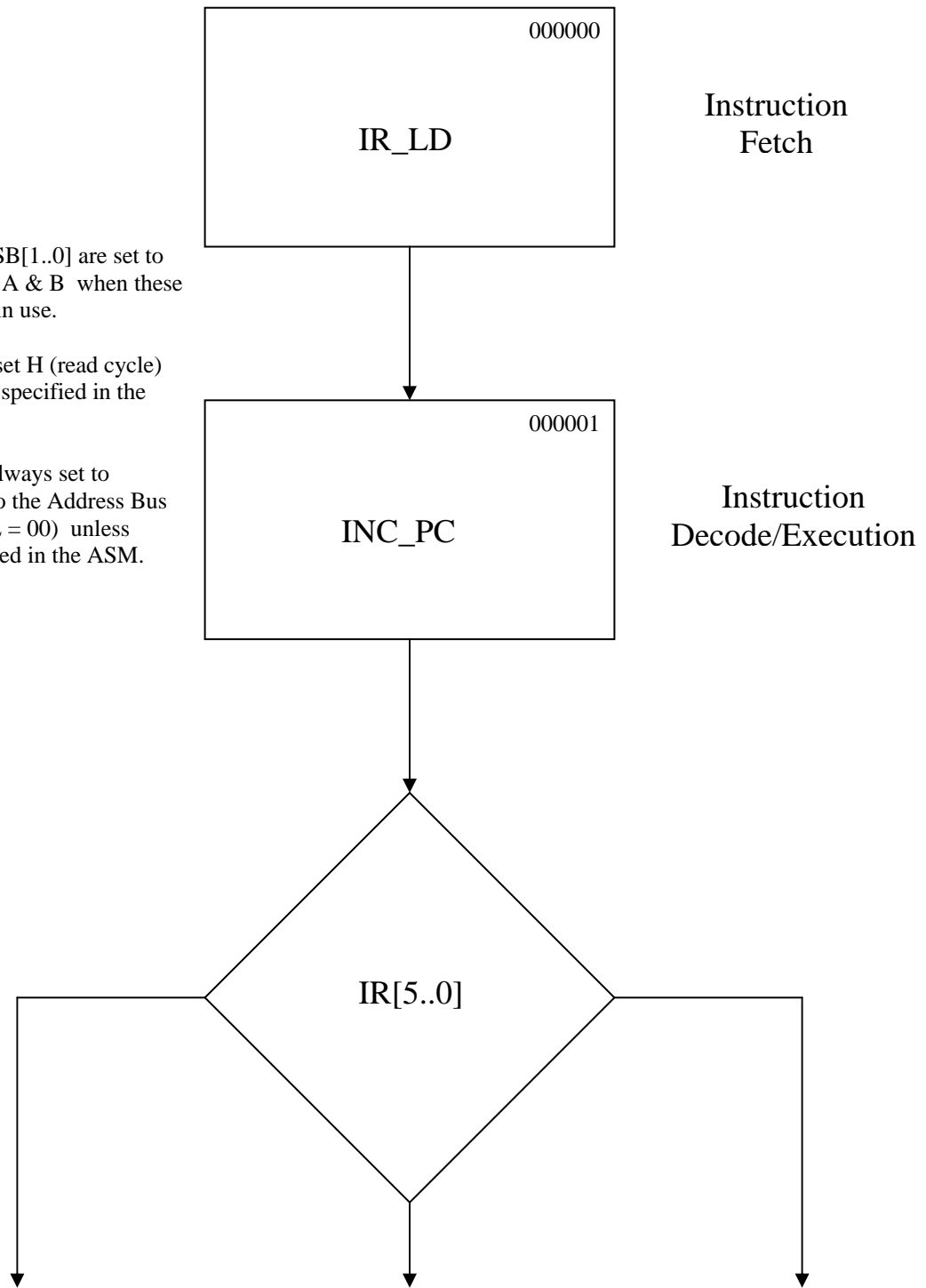


G-CPU Controller Flow Charts

Special Notes:

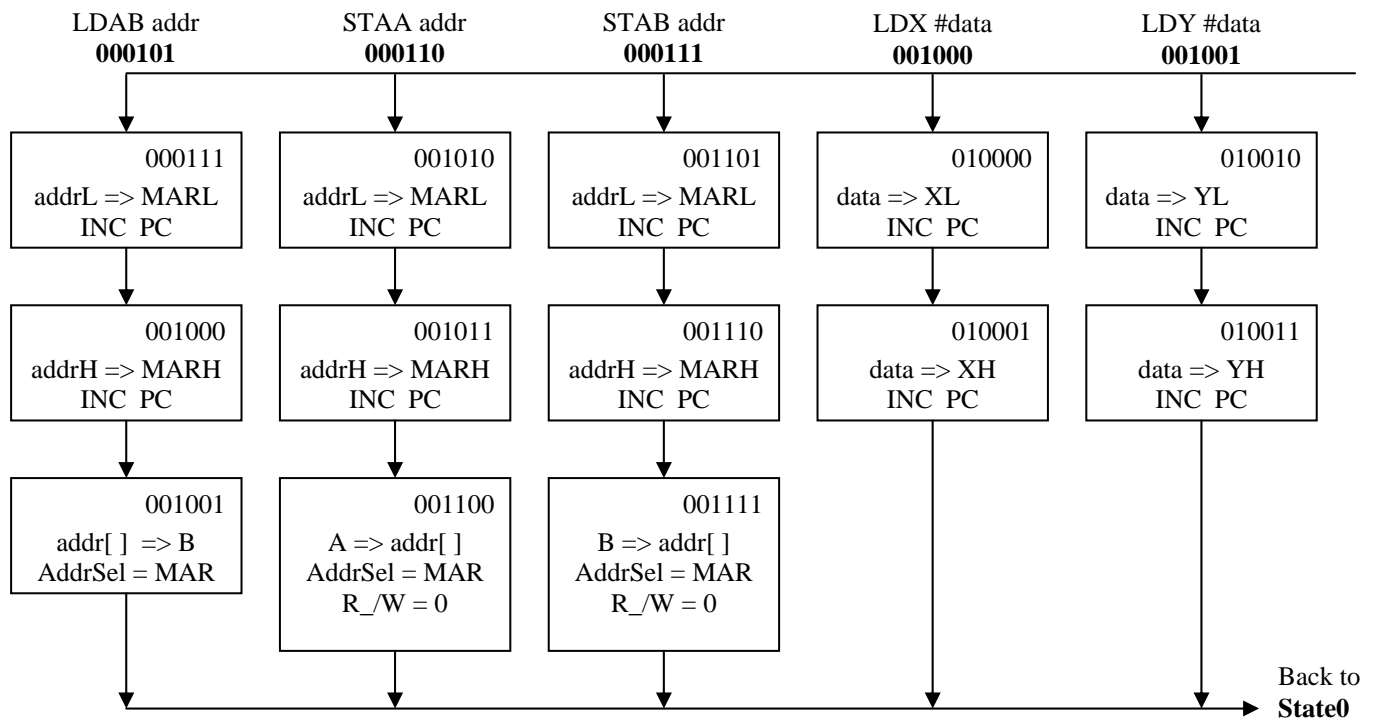
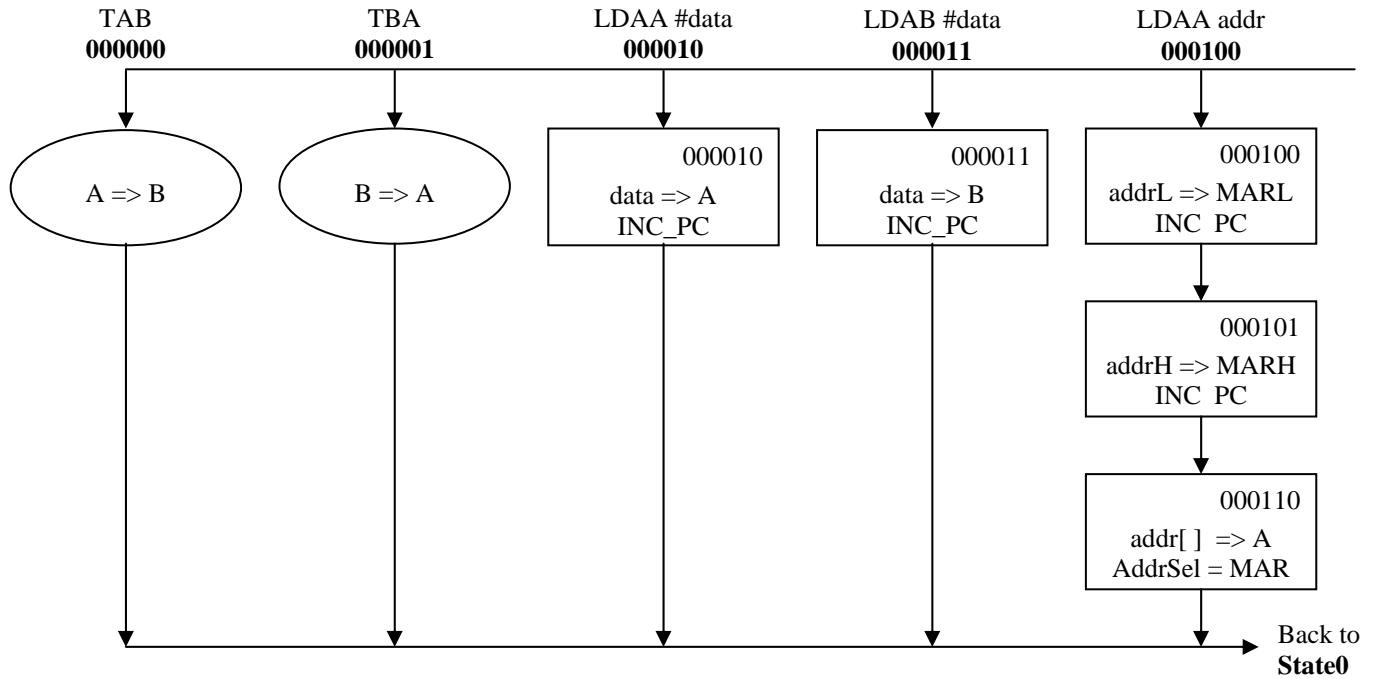
1. MSA[1..0] & MSB[1..0] are set to protect registers A & B when these registers are not in use.
2. R_/W is always set H (read cycle) unless otherwise specified in the ASM chart.
3. ADDR_SEL is always set to connect the PC to the Address Bus (i.e. ADDR_SEL = 00) unless otherwise specified in the ASM.



Instructions Listed on Next Pages...

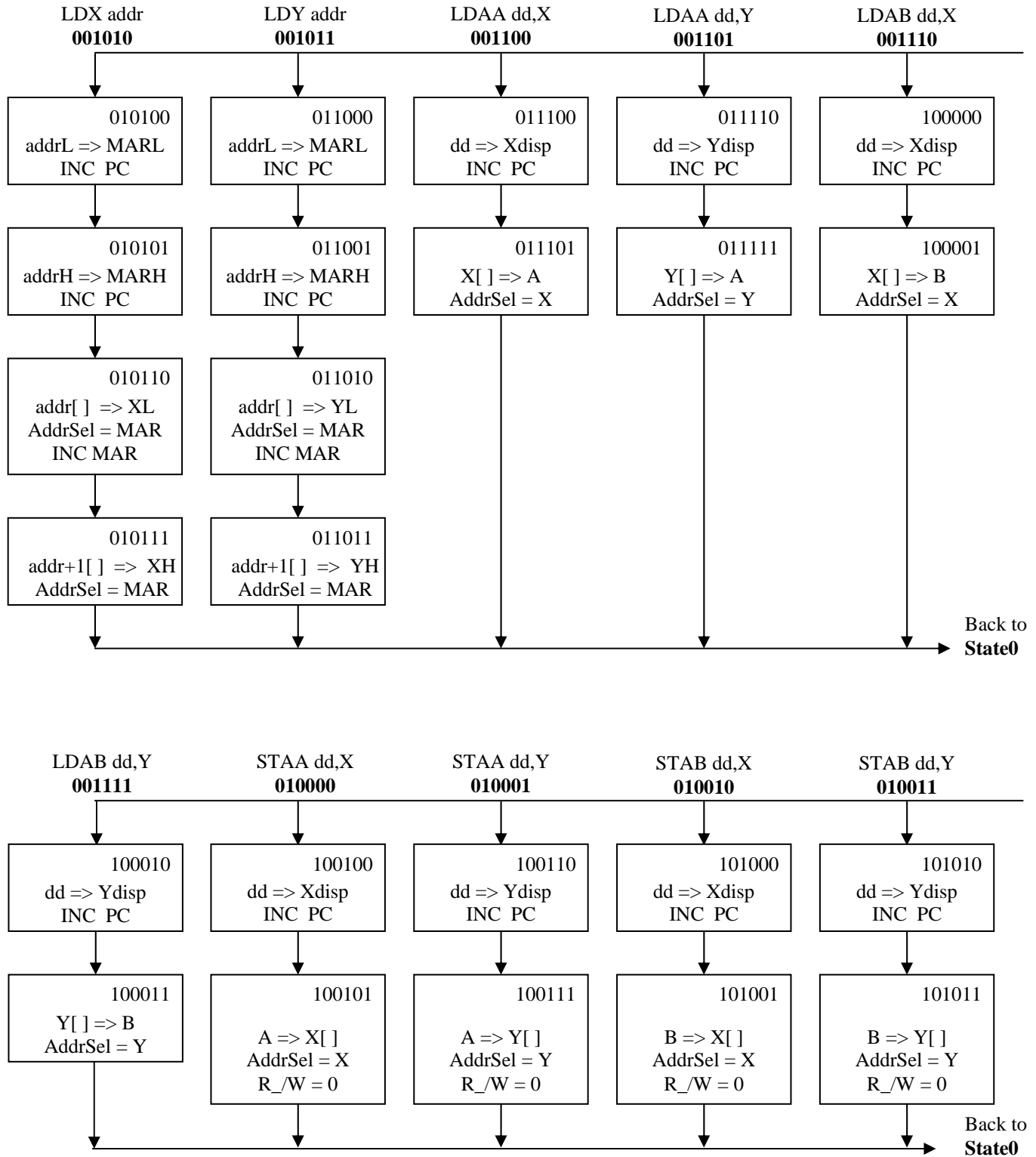
G-CPU Controller Flow Charts

Data Movement Instructions:



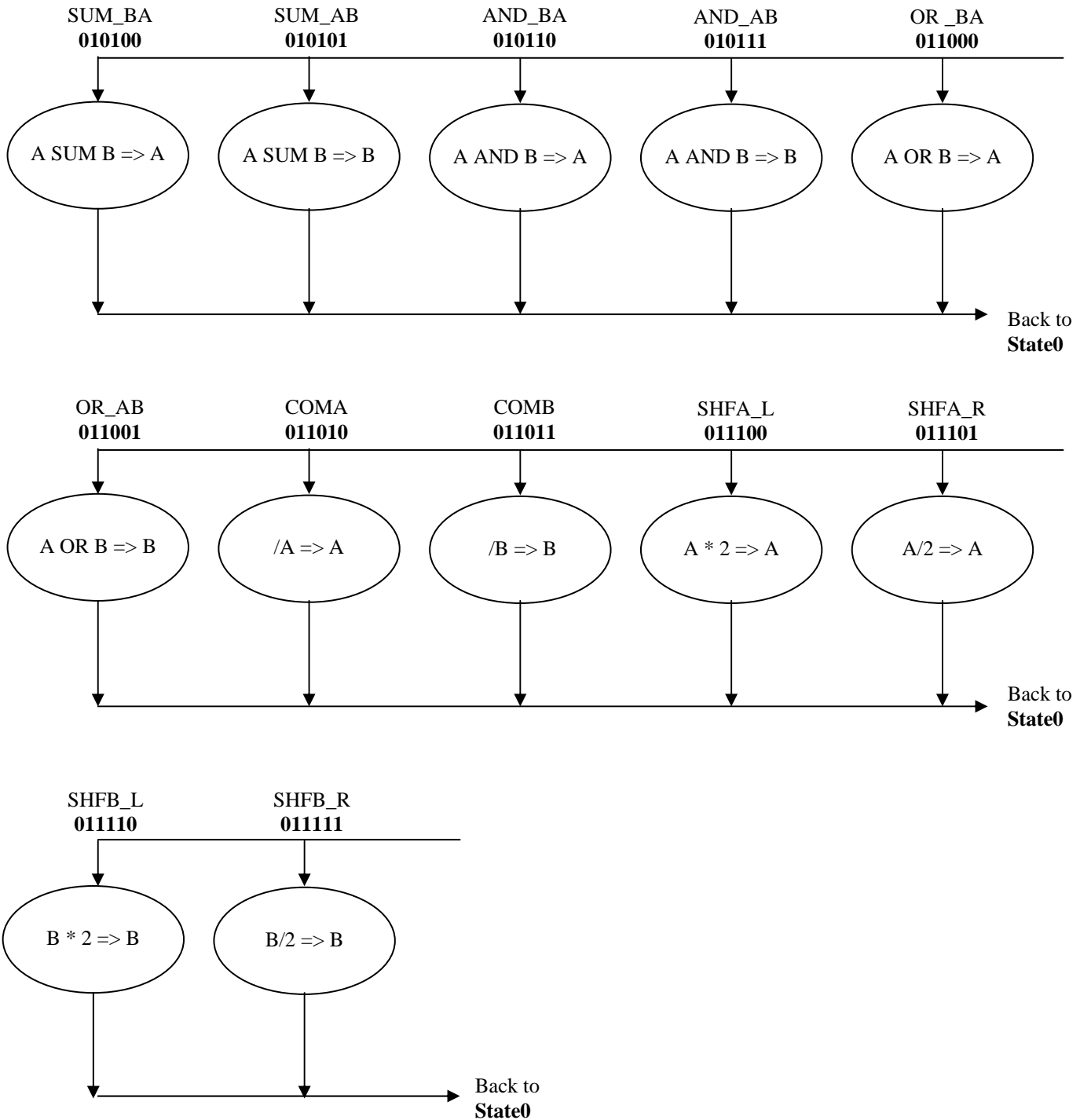
G-CPU Controller Flow Charts

Data Movement Instructions (continued):



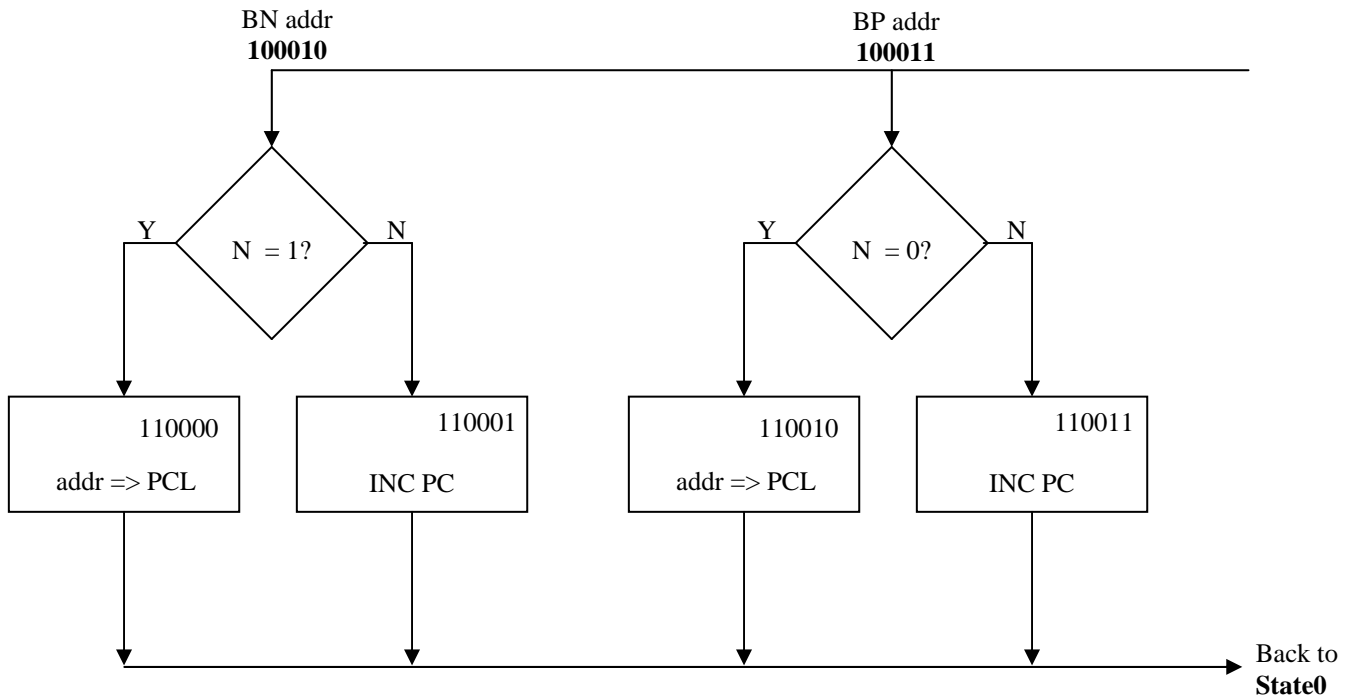
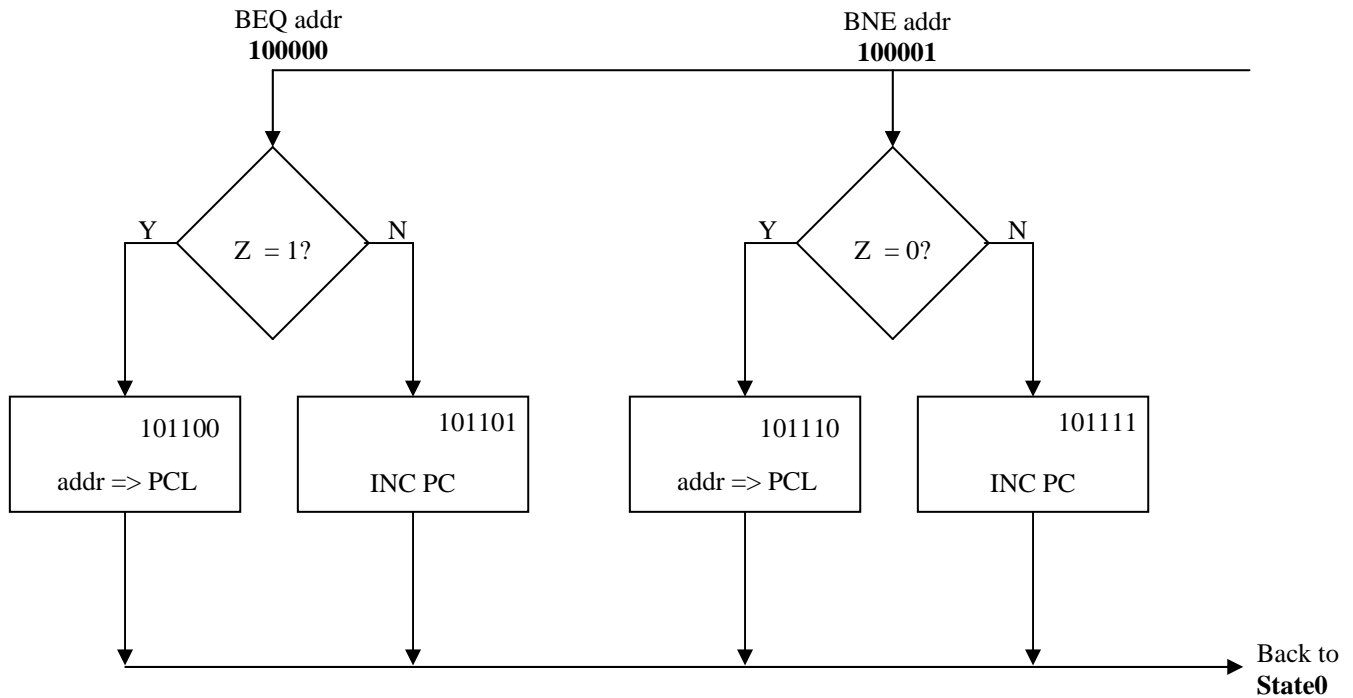
G-CPU Controller Flow Charts

ALU Related Instructions:



G-CPU Controller Flow Charts

Branch Instructions:



G-CPU Controller Flow Charts

Additional Instructions:

