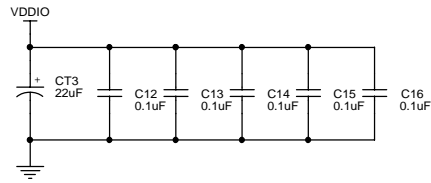
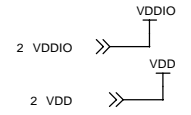
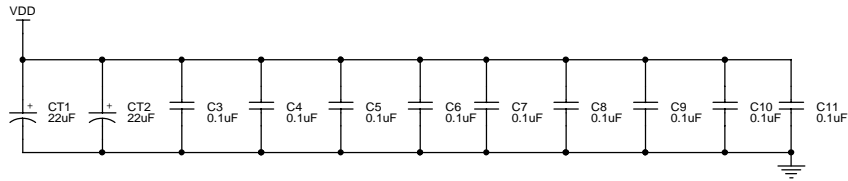


ADCREFP/ADCREFM caps are 0805 size. Use biggest trace allowable with no vias to connect these to processor

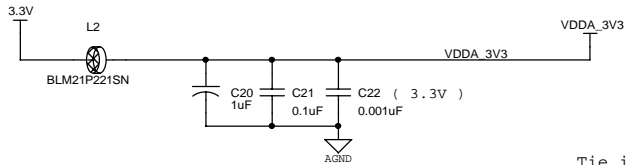
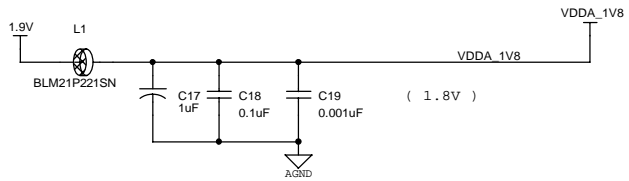
ADCLO IS TIED DIRECTLY TO PLANE

TMS320F28335 - 176 QP

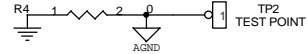
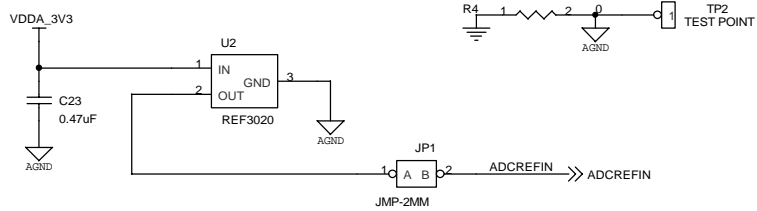
Title		
TMS320F28335 176-Pin LQFP Reference Design - DSP		
Size B	Document Number	Rev 2
Date:	Thursday, December 20, 2007	Sheet 1 of 9



LOCATE NEAR DSP

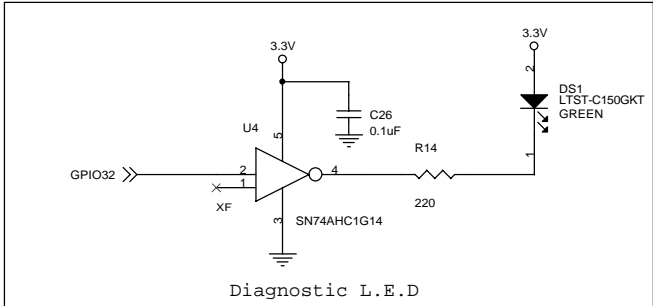
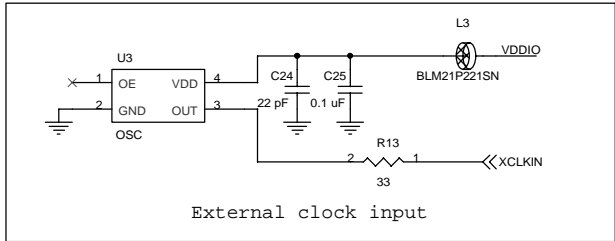
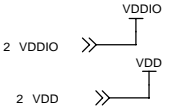
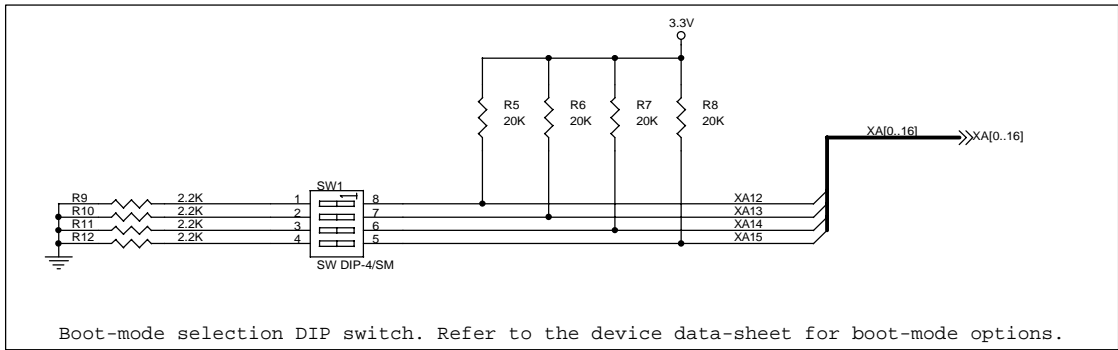


Tie in one point on the Ground plane

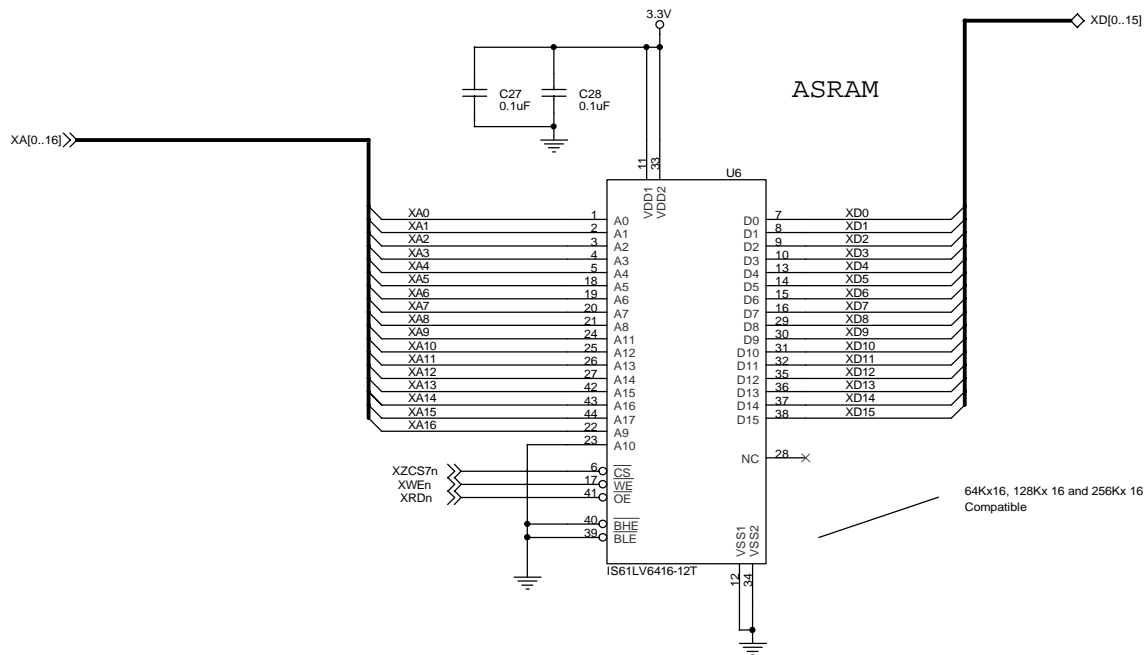
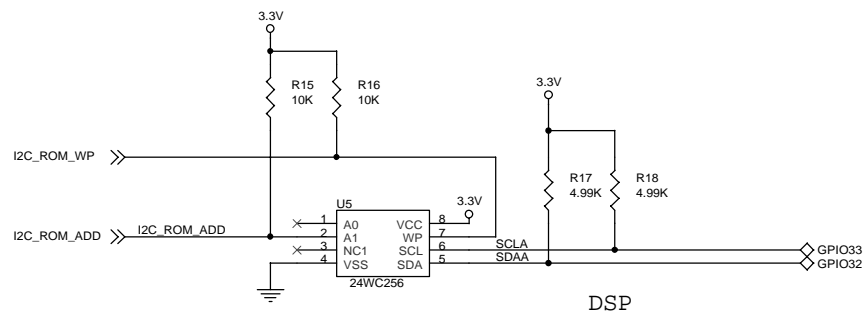


Decoupling caps in this page are for the DSP supply rails. They should be placed as close as possible to the supply pins.

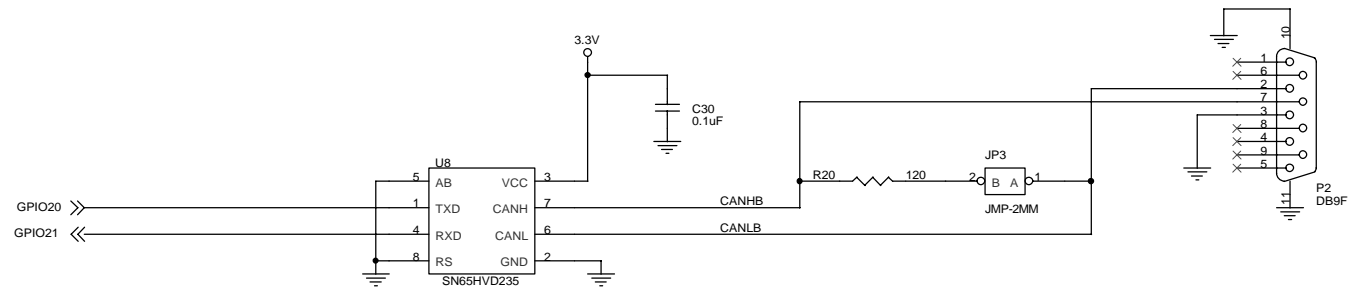
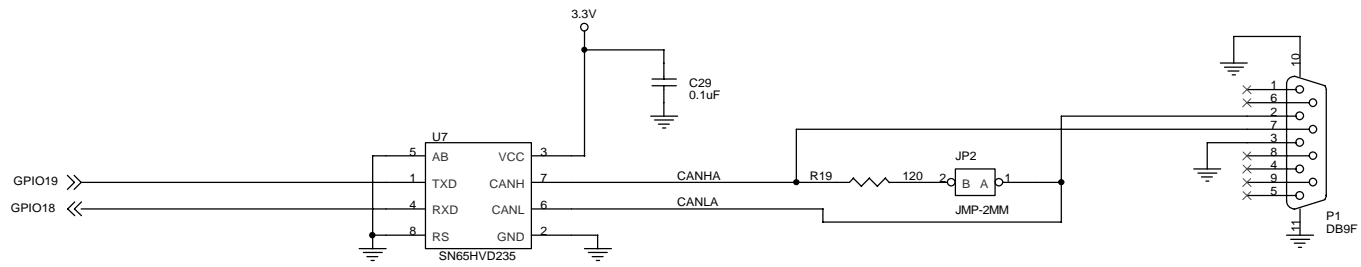
Title		TMS320F2833x 176-Pin LQFP Reference Design - Decoupling caps
Size	Document Number	Rev
B		2
Date:	Thursday, December 20, 2007	Sheet 2 of 9



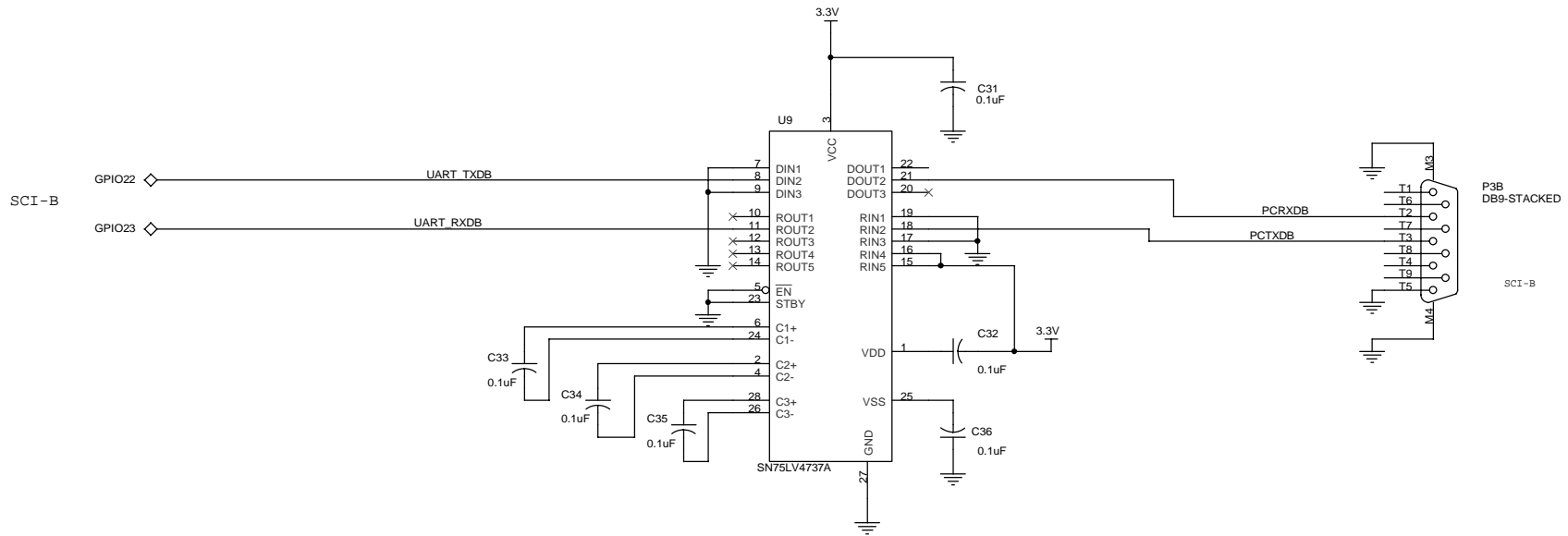
Title		
TMS320F2833x 176-Pin LQFP Reference Design - Boot-mode select, OSC		
Size	Document Number	Rev
B		2
Date:	Thursday, December 20, 2007	Sheet 3 of 9



Title	
TMS320F2833x 176-Pin LQFP Reference Design - Memory	
Size	Document Number
B	Rev 2
Date:	Thursday, December 20, 2007
Sheet	4 of 9

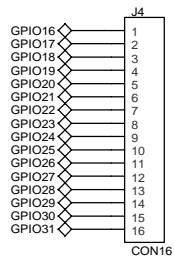
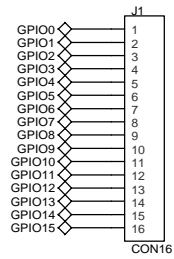


Title		
TMS320F2833x 176-Pin LQFP Reference Design - CAN		
Size	Document Number	Rev
B		2
Date:	Thursday, December 20, 2007	Sheet 5 of 9

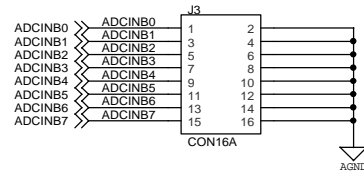
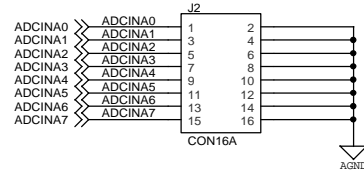


Title		
TMS320F2833x 176-Pin LQFP Reference Design - SCI		
Size	Document Number	Rev
B		2
Date:	Thursday, December 20, 2007	Sheet 6 of 9

GPIO expansion

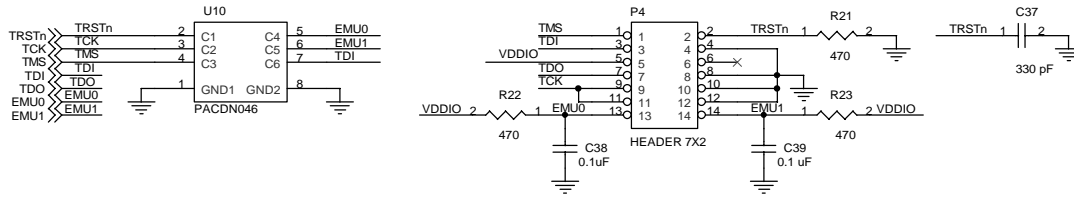


Analog expansion

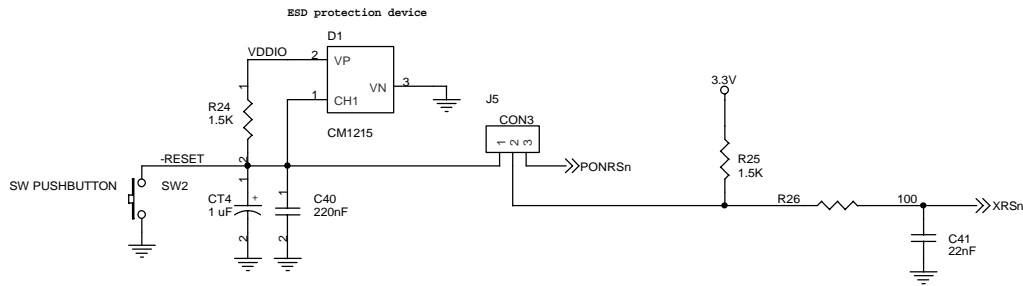


Title		
TMS320F2833x 176-Pin LQFP Reference Design - I/O Expansion		
Size	Document Number	Rev
B		2
Date:	Thursday, December 20, 2007	Sheet 7 of 9

ESD protector (TVS diode array) for JTAG pins



JTAG

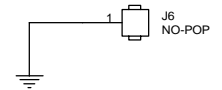
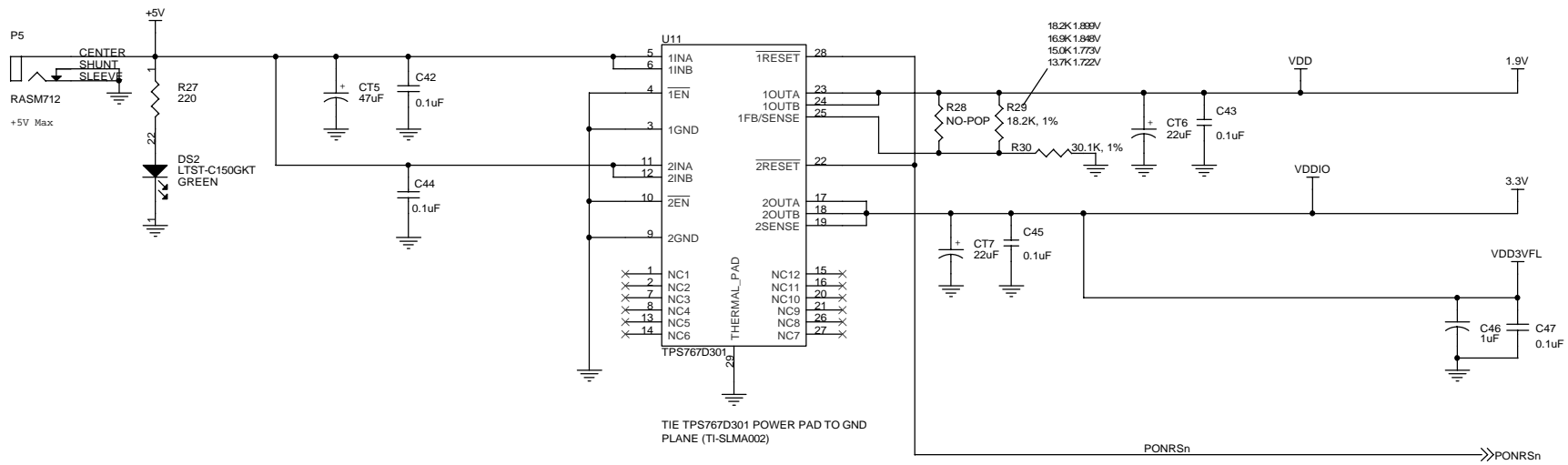


Reset circuitry

Locate all components of the reset circuitry close to the DSP XRSn pin for best EMI/ESD noise immunity.

Title		
TMS320F2833x 176-Pin LQFP Reference Design - JTAG & Reset		
Size	Document Number	Rev
B		2
Date:	Thursday, December 20, 2007	Sheet 8 of 9





Title		
TMS320F2833x 176-Pin LQFP Reference Design - Power		
Size B	Document Number	Rev 2
Date:	Thursday, December 20, 2007	Sheet 9 of 9