

out of the **B** **X**

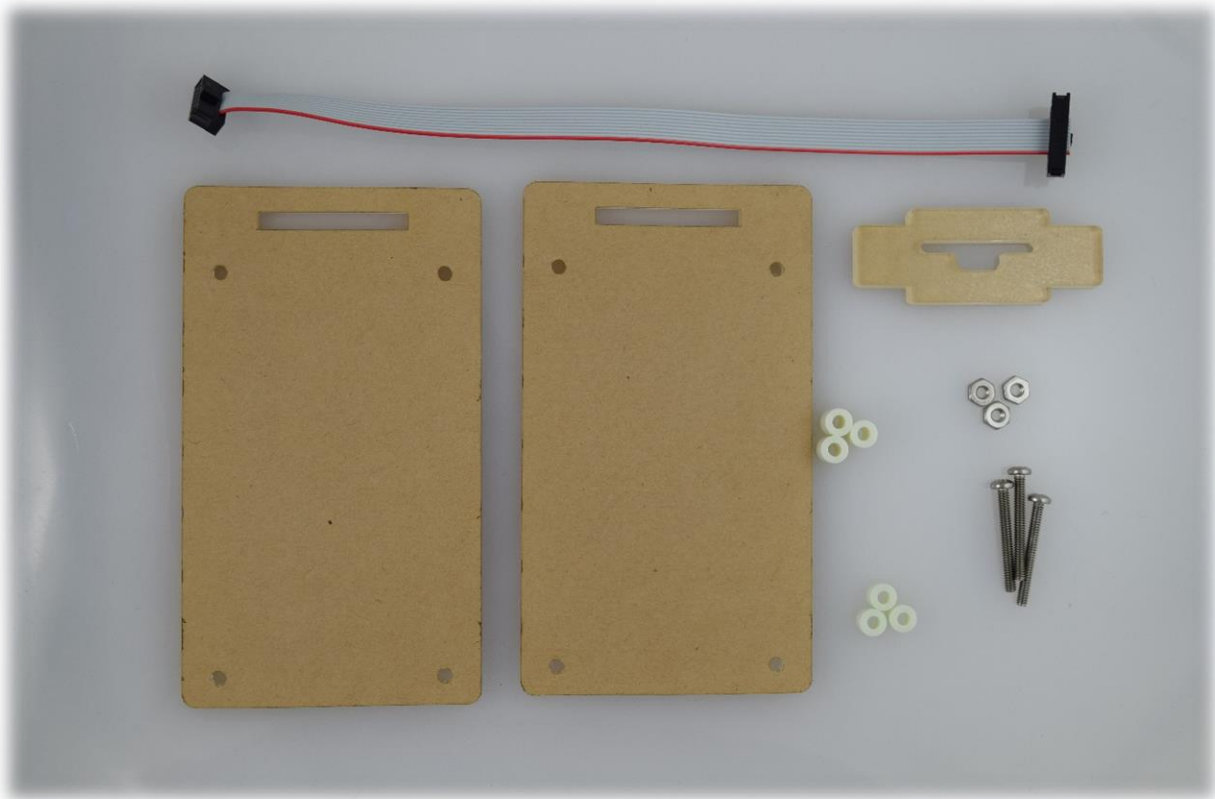
Atmel ICE Enclosure Assembly

Last Updated May 8, 2017

Table of Contents

Parts	3
Read Before Proceeding	4
Procedure	5
Step 1	5
Step 2	6
Step 3	7
Step 4	8
Step 5	9
Step 6	10

Ports



Item Number	Description	Quantity
1	10-pin Programming Cable	1
2	Atmel ICE USB Bracket	1
3	Top/Bottom Bracket	2
4	2-56 3/4" screws	3
5	2-56 nuts	3
6	#2 1/4" spacers	3
7	#2 1/8" spacers	3

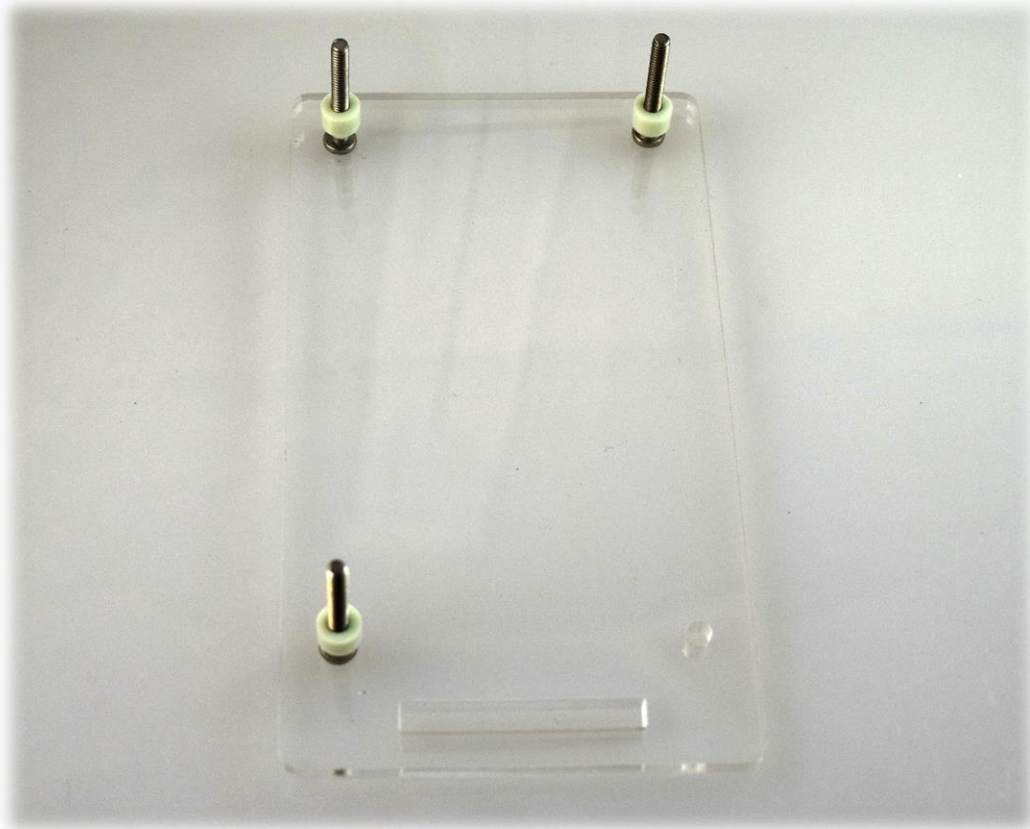
Read Before Proceeding

Test fit Item #2 into the slots of each item #3. There should be little to no resistance! **If the part does not easy fit do not force it!** Contact your TA so that you can get a replacement part.

Procedure

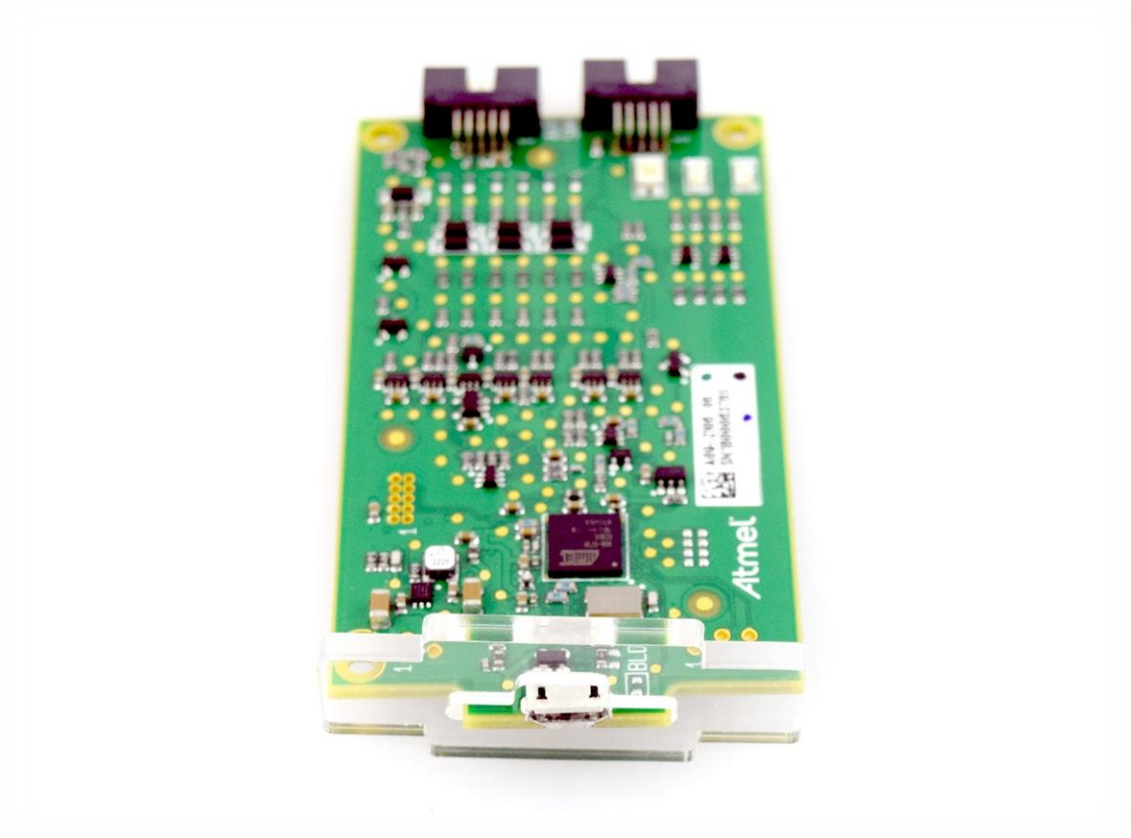
Step 1

Insert the screws through the top/bottom bracket, and then stack the 1/8" spacers on top



Step 2

Slip the Atmel ICE USB Bracket over the Atmel ICE as shown below.



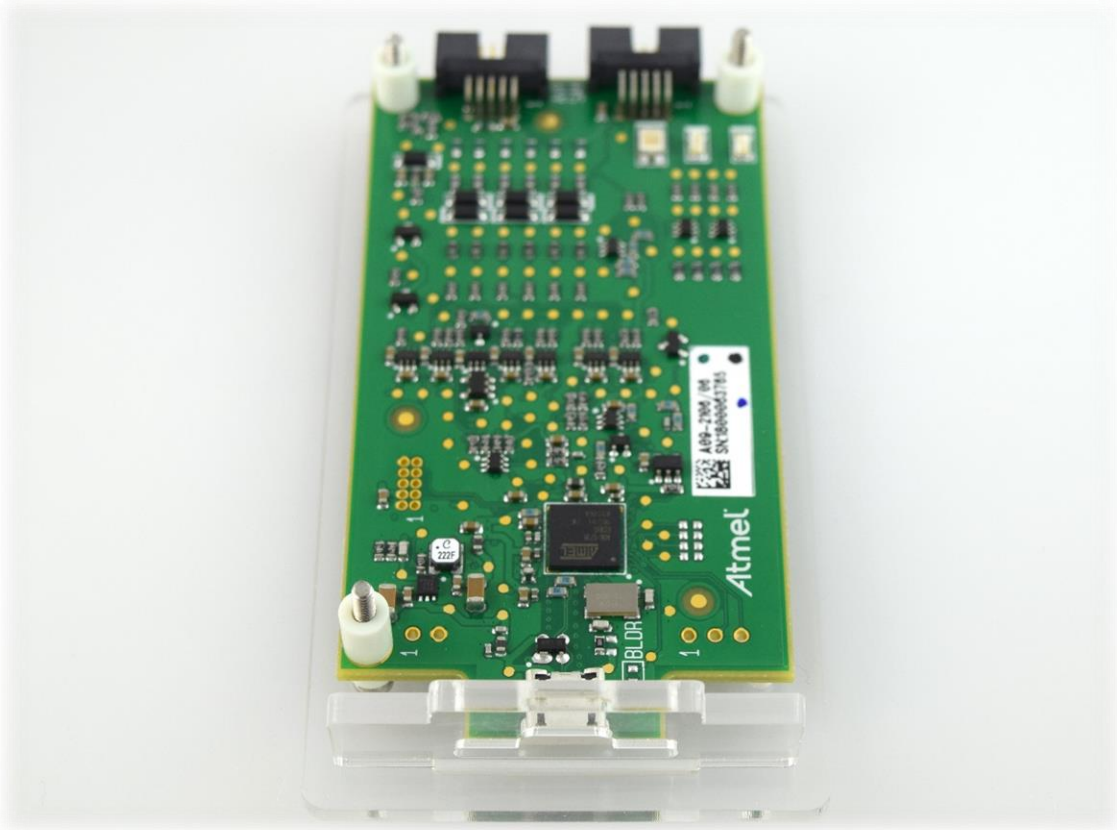
Step 3

Insert the subassembly from step 2 onto the subassembly from step 1.



Step 4

Stack the ¼" spacers onto the screws.



Step 5

Add the final top/bottom bracket onto the assembly and fasten nuts onto the screws.



Step 6

The included cable is polarized. Only one side of the cable can be inserted into the Atmel ICE. The other side is used for interfacing with the μ PAD. Insert the smaller cable end into the AVR side of the Atmel ICE as shown below.

